



MIRAMAR
RESOURCES LTD.

Miramar Resources Ltd

“Creating shareholder value through discovery”

**INAUGURAL ANNUAL GENERAL MEETING
4 NOV 2021**

ASX: M2R



Disclaimer/Competent Person Statement

Forward-Looking Statements

Statements in this presentation which are not statements of historical facts, including but not limited to those relating to the proposed transactions, are forward-looking statements. These statements instead represent management's current expectations, estimates and projections regarding future events.

Although management believes the expectations reflected in such forward-looking statements are reasonable, forward-looking statements are based on the opinions, assumptions and estimates of management at the date the statements are made and are subject to a variety of risks and uncertainties and other factors that could cause actual events or results to differ materially from those projected in the forward-looking statements. Accordingly, investors are cautioned not to place undue reliance on such statements.

Competent Person Statement

The information in this report that relates to Exploration Targets or Exploration Results is based on information compiled by Allan Kelly, a “Competent Person” who is a Member of The Australian Institute of Geoscientists. Allan Kelly is the Executive Chairman of Miramar Resources Ltd. He is a full-time employee of Miramar Resources Ltd and holds shares and options in the company.

Allan Kelly has sufficient experience that is relevant to the style of mineralisation and type of deposits under consideration and to the activity being undertaken to Qualify as a “Competent Person” as defined in the 2012 Edition of the ‘Australasian Code for Reporting of Exploration Results, Mineral Resources and Ore Reserves’. Allan Kelly consents to the inclusion in this presentation of the matters based on his information and in the form and context in which it appears.

Information on historical results for all projects within this presentation, including JORC Table 1 and 2 Information, is included in the Miramar Resources Limited Prospectus dated 4 September 2020.

Outline

- 2020/21 - Key Achievements
 - IPO and ASX listing
 - Gidji JV - **Marylebone**
 - Glandore
 - Other Projects
- 2021/22 – Planned Activities
- Questions



Key achievements since listing

IPO and ASX Listing

- Heavily oversubscribed \$8M IPO managed by Shaw and Partners
- Listed on ASX 22 Oct 2020

Gidji JV

- Aircore drilling has outlined several new targets including a **potential large new gold discovery at Marylebone**
- Diamond drilling and orientation IP survey completed at 8-Mile
- Detailed ground magnetic surveys
- RC drilling programme



Key achievements since listing

Glandore

- Heritage permitting
- Tenement extensions
- Infill gravity survey
- Aircore drilling - awaiting assays

Bangemall (Ni-Cu-PGE)

- Several new applications submitted
- Mt Vernon and Dooley Downs tenements granted

Other Projects

- Whaleshark MMI sampling x 2
- Lang Well gravity survey
- Garden Gully sold to Sipa (\$150k)

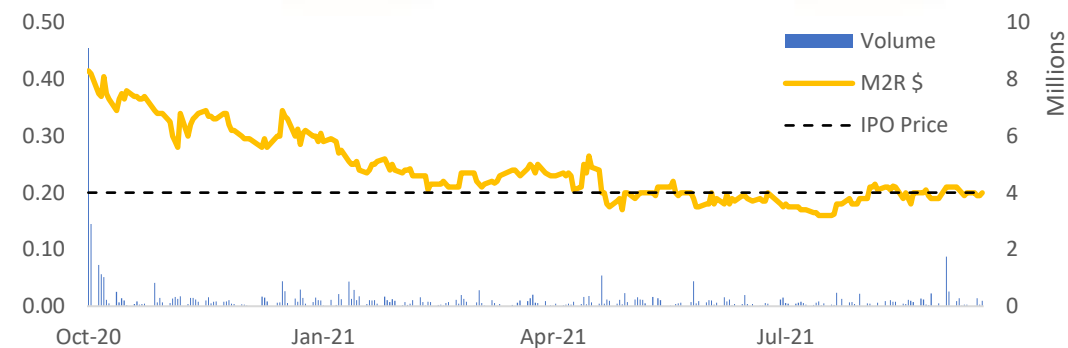


Corporate Overview

Experienced Board	
Allan Kelly (Exec. Chairman)	<ul style="list-style-type: none"> Geologist/Geochemist/Manager 30 years experience in mineral exploration, development and production (Australia/Nth America) Founding MD, Doray Minerals Ltd AMEC “Prospector” Award – 2014
Marion Bush (Technical Director)	<ul style="list-style-type: none"> Geologist/Analyst/Manager 25+ years experience in exploration, management, directorship and marketing within the UK, Australia, Africa, and South America
Terry Gadenne (Non-Exec. Director)	<ul style="list-style-type: none"> Rescue helicopter pilot and former Army and Navy Officer 25+ years management experience in the defence forces, aviation, agriculture and mining services
Mindy Ku (Co. Sec/CFO)	<ul style="list-style-type: none"> 15+ years experience with public and private companies

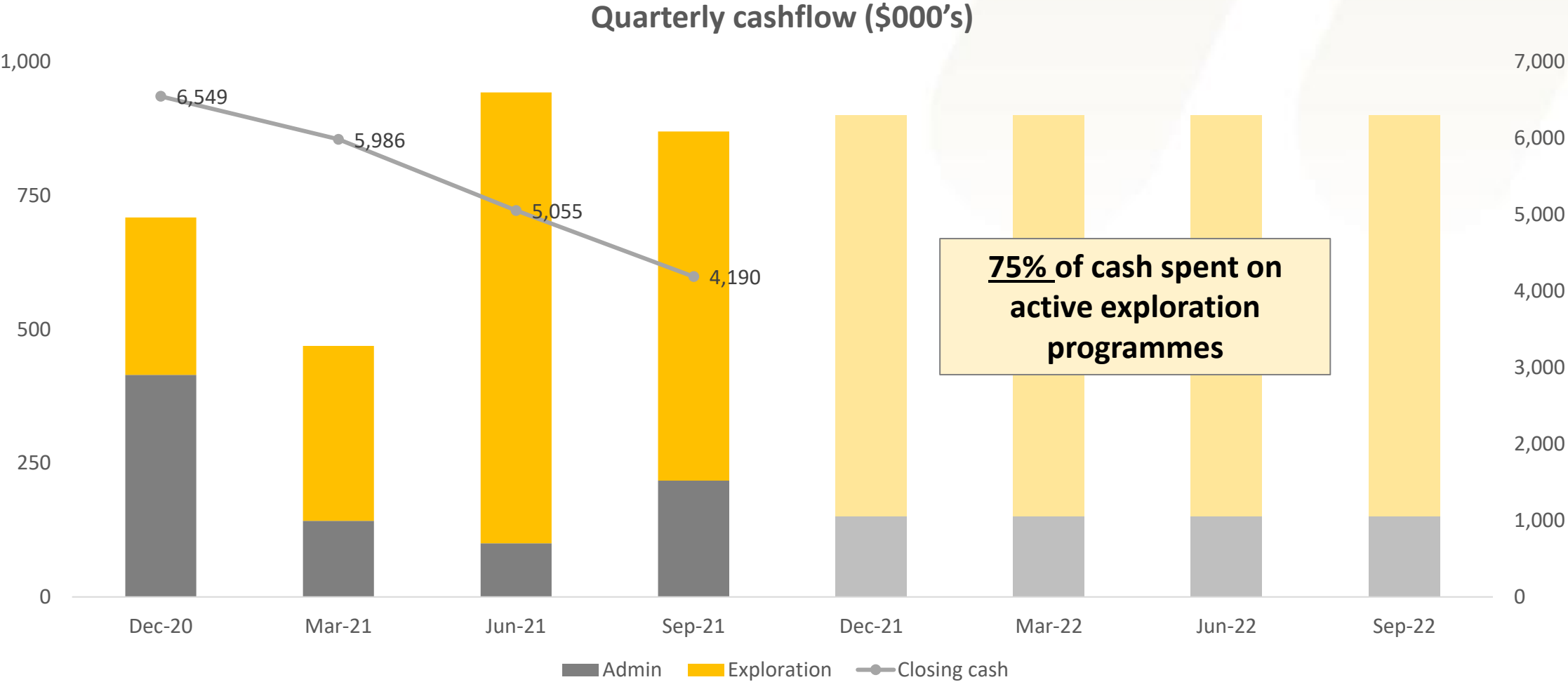


ASX Code	M2R
Shares on Issue	56.3M
Shareholders	~800
Market Capitalisation (@ 20c)	\$10.1M
Cash/Investments (30 Sept 21)	\$4.2M
Enterprise Value	\$5.0M



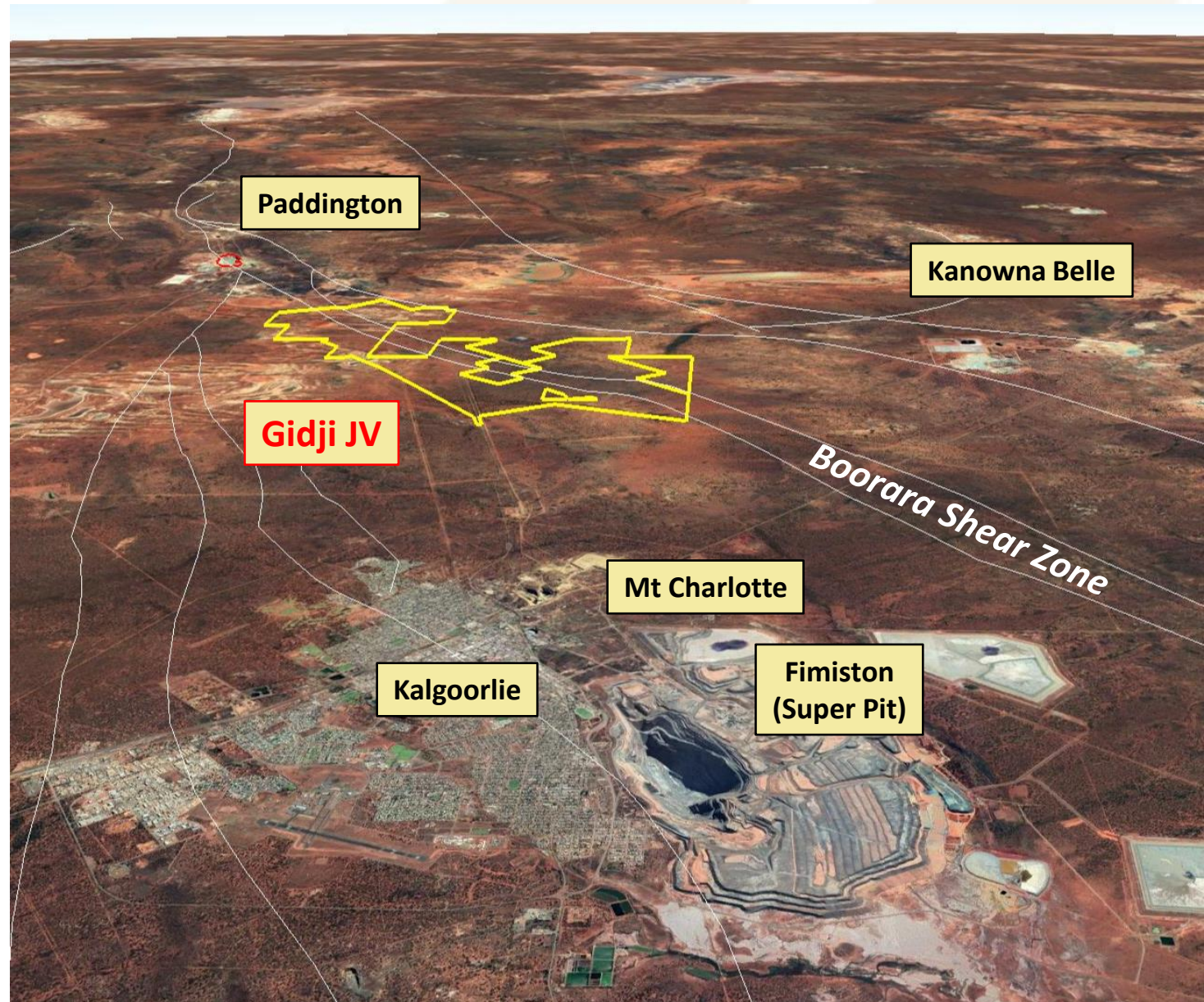
Substantial Shareholders	%
XGS Pty Ltd (Allan Kelly)	11.9
Faraday Nominees Pty Ltd	5.5
Top 20	41.1
<i>Board/Management</i>	<i>13.0</i>

Spending money on the ground...



Gidji JV (80%)

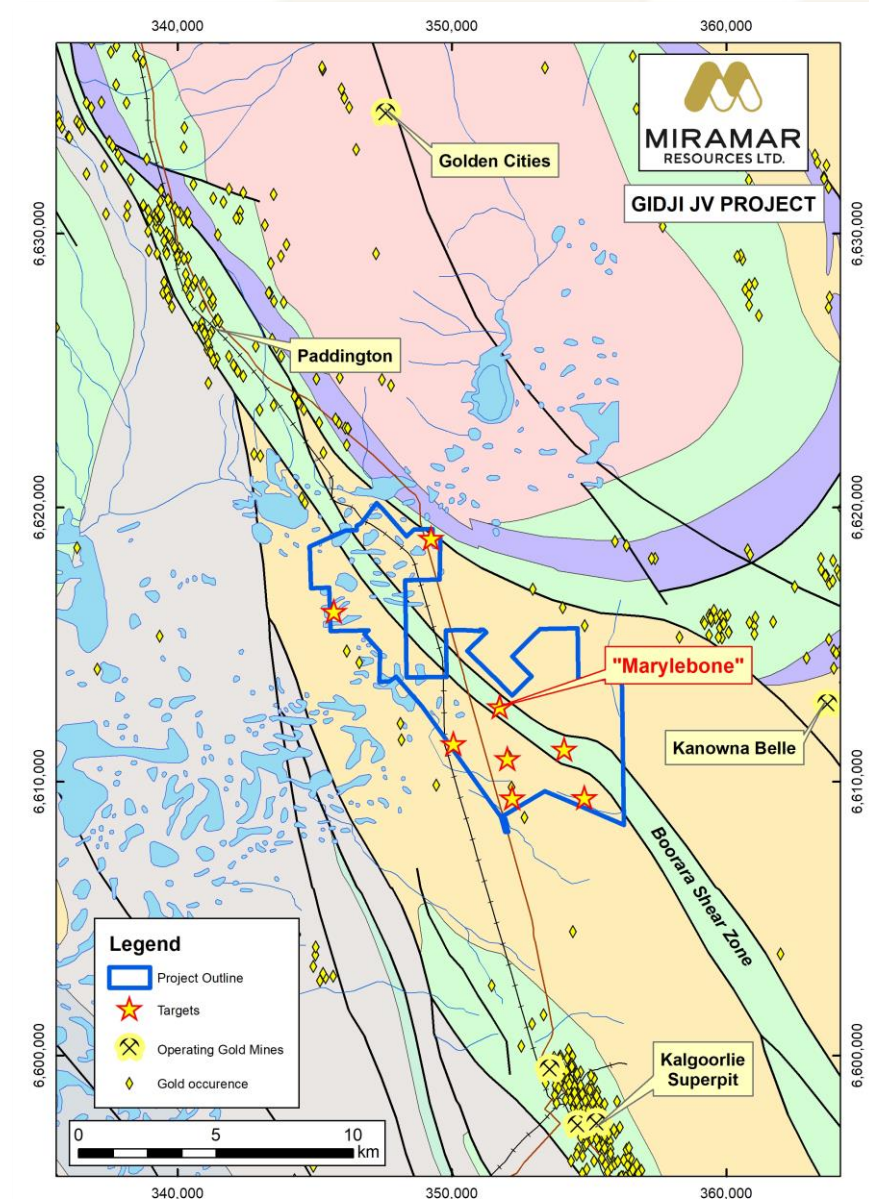
Potential for a large new gold discovery on Kalgoorlie's doorstep...



Gidji JV

Underexplored strategic land position

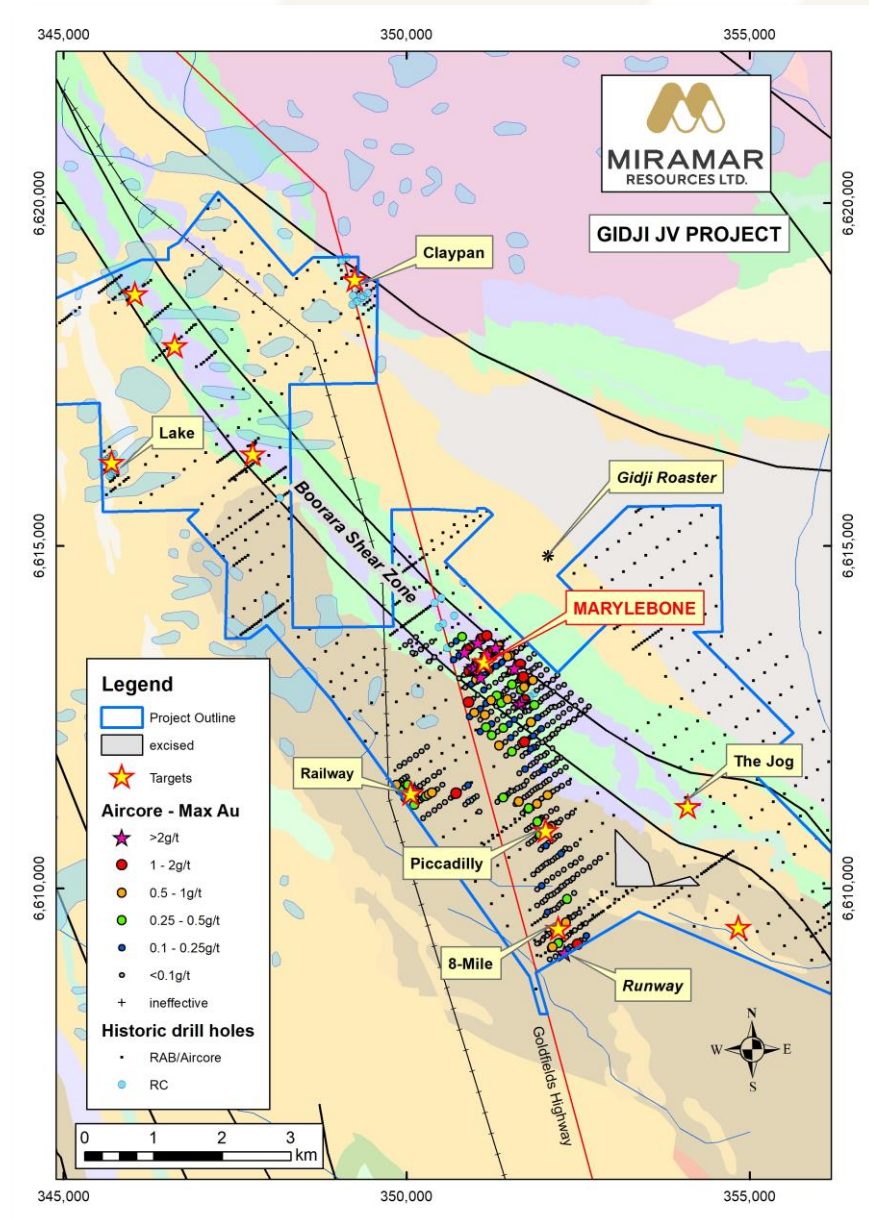
- Extensive transported cover obscures prospective geology/structures
- Underexplored – **most drilling <50m**
- Aircore drilling has identified multiple new targets including a “Paddington lookalike” at **Marylebone**
- Additional targets on recently granted tenements
 - **Boorara Shear North**
 - **The Jog**
 - **Lake** – high-grade RC intercepts
 - **Claypan** – along strike from Kanowna Belle



Gidji JV

Work completed since listing

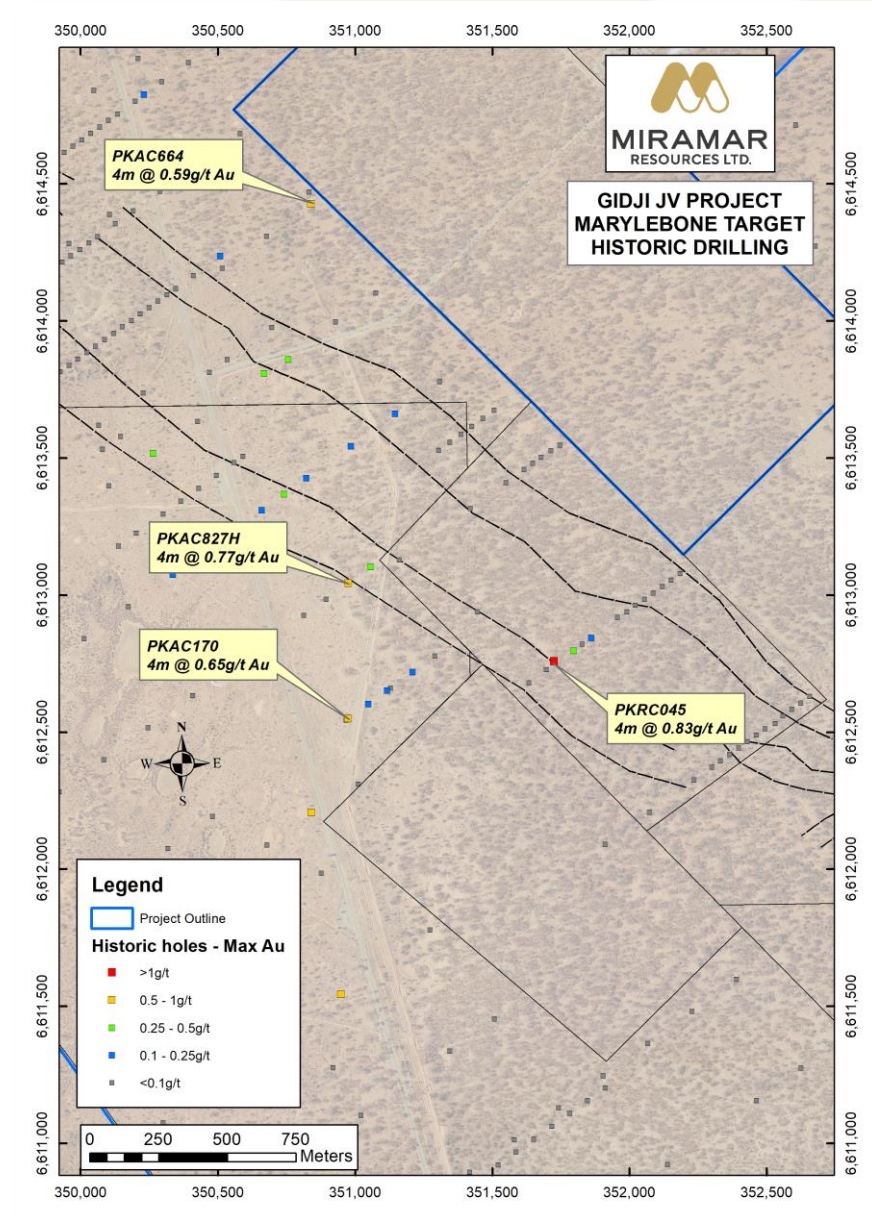
- 4 phases of aircore drilling completed on granted tenements
 - (454 holes for 25km)
- 3 x DDH at 8-Mile
- Orientation IP survey
- Ground magnetic survey (Marylebone)
- 6 x RC holes
- All remaining applications granted



Marylebone

October 2020 (pre-IPO)

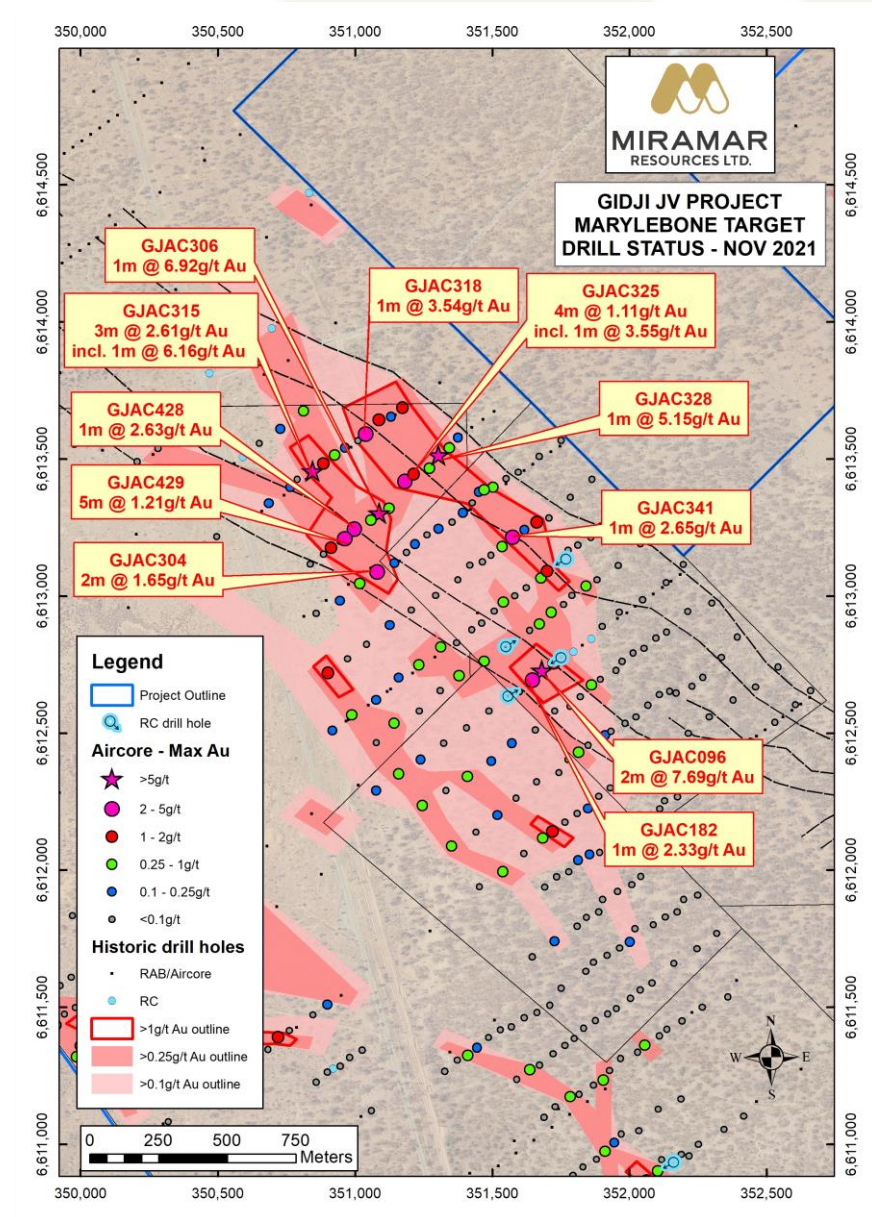
- Historical drilling
 - Mostly RAB/aircore
 - Average hole depth <50m
 - Widely-spaced lines/holes
 - Angled holes - many did not penetrate transported overburden
- Best previous drill result
 - 4m @ 0.83g/t Au (PKRC045)



Marylebone

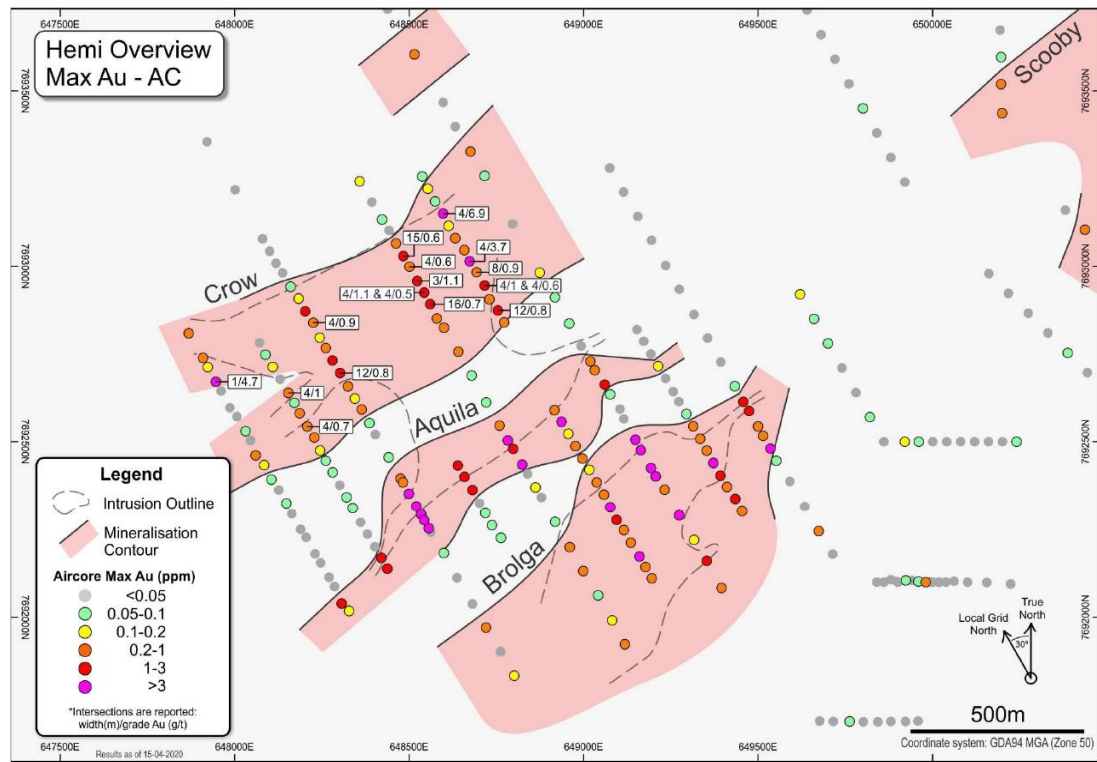
October 2021

- Multiple results **>2g/t Au** across multiple sections
 - **+6g/t Au results 300m apart**
- 2km footprint remains open to NW
- Untested at depth >60m
- Ground magnetic survey completed
 - extension commenced (Nov 21)
- Infill/extension aircore drilling planned (Nov/Dec 21)

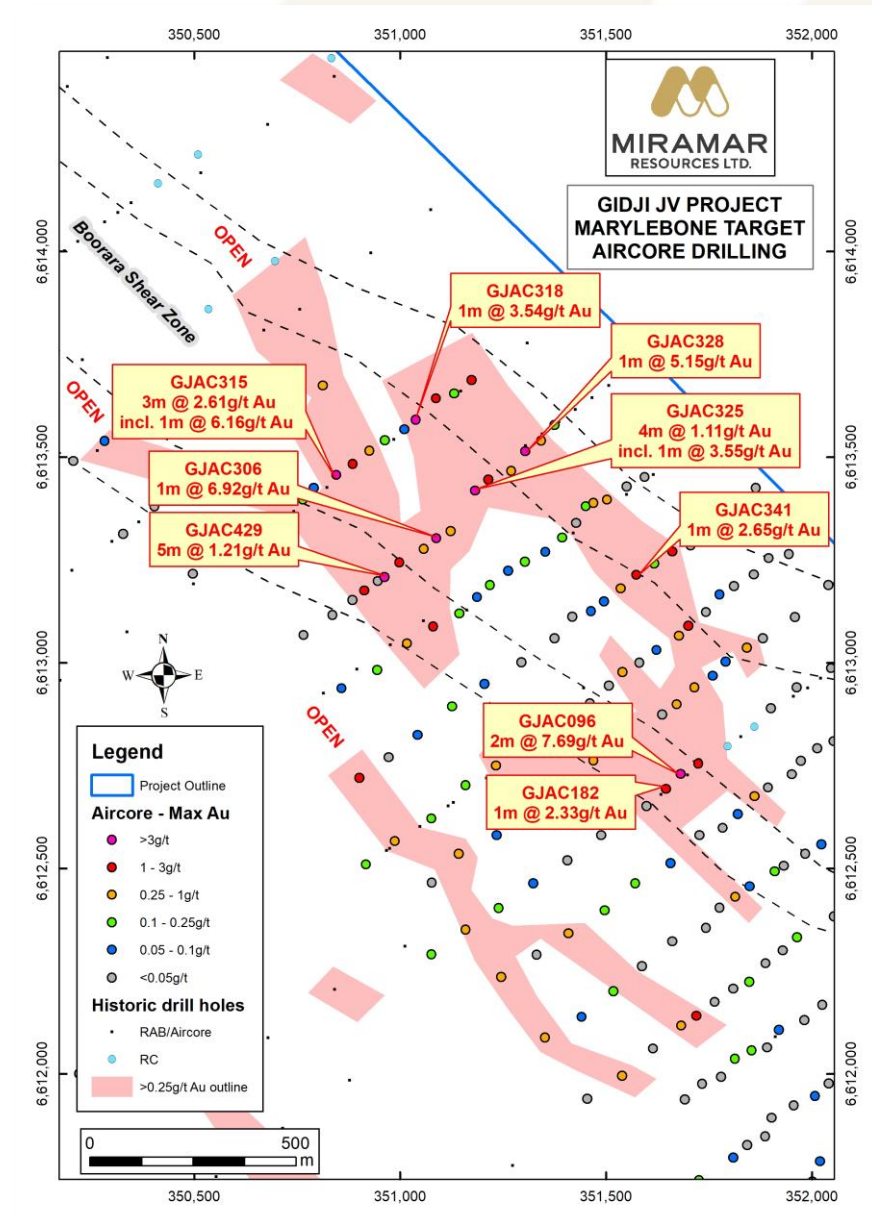


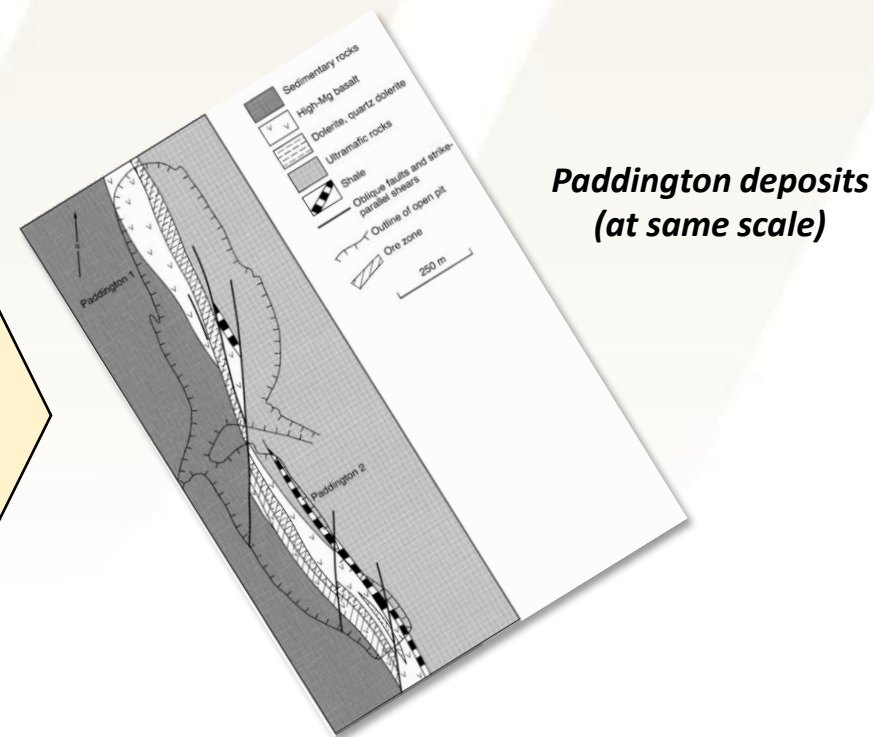
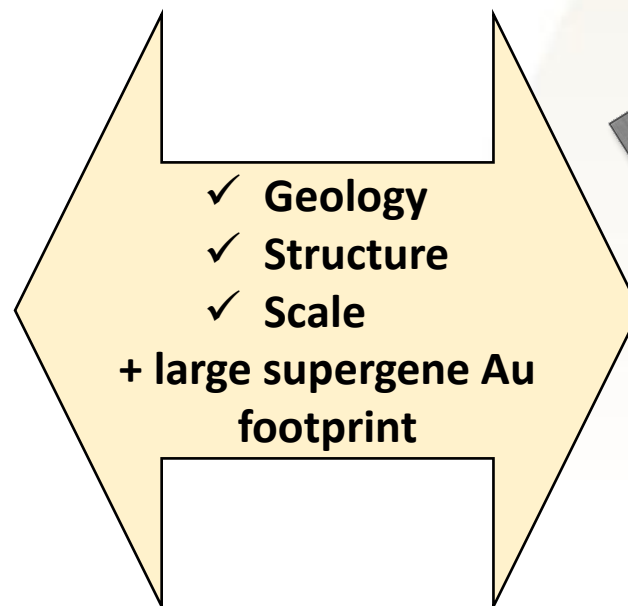
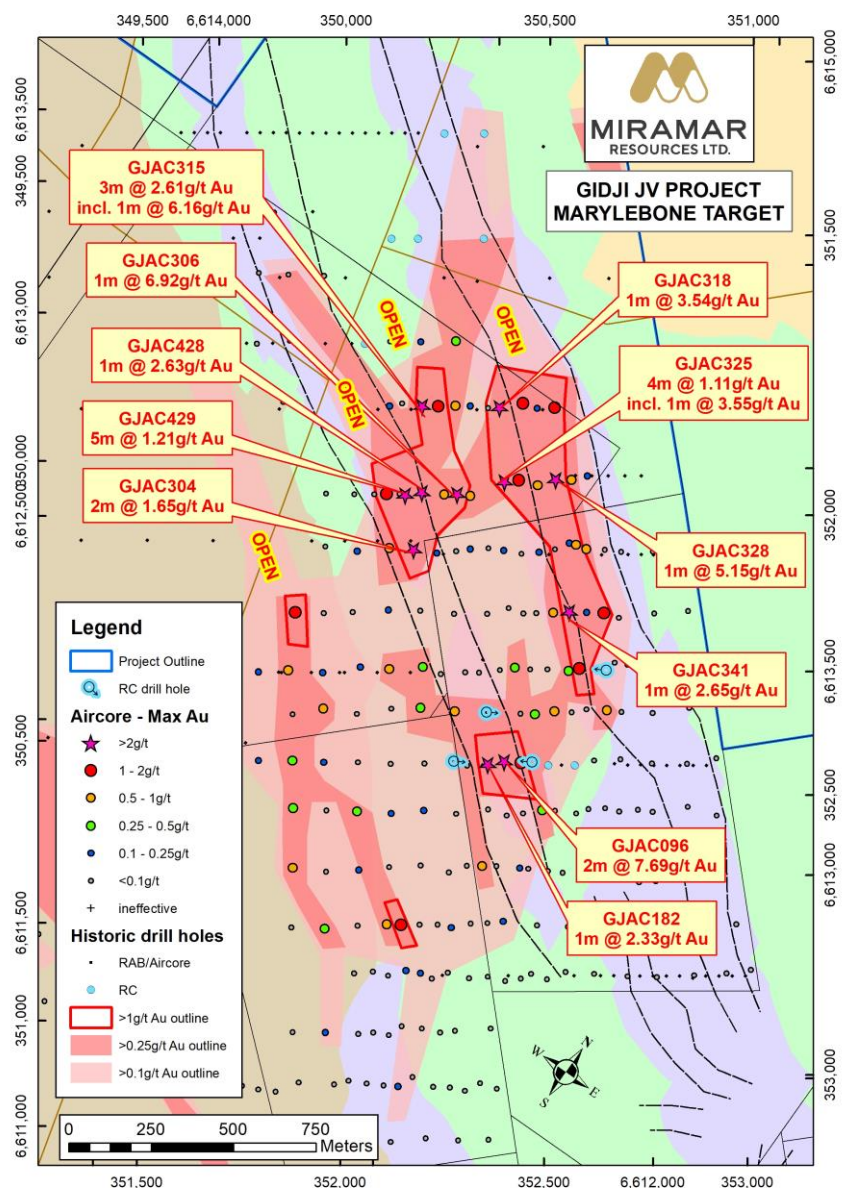
How big is Marylebone?

Aircore footprint comparable with De Grey's Hemi discovery



(Source: De Grey Mining, 17 April 2020)





Targeting competent mafic rocks (e.g. dolerite) sandwiched between less competent UM/sed units

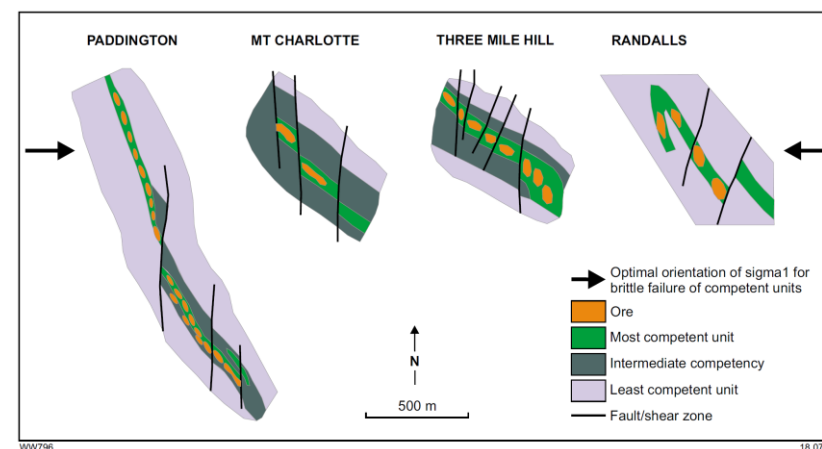


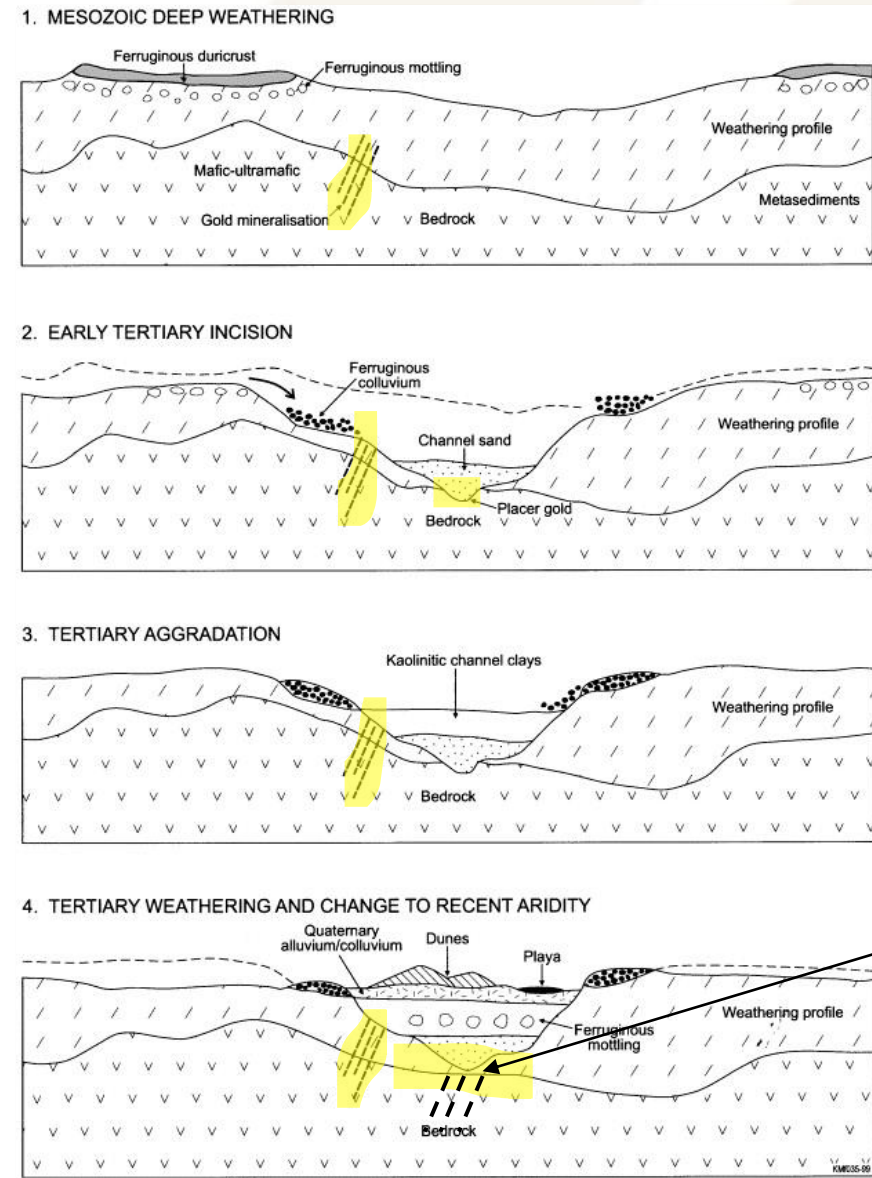
Figure 3.25. Schematic maps of gold deposits formed in rheologically competent units that have been offset and partially or completely isolated by oblique faults (after Groves et al., 2000)

(Witt, 2016)

Marylebone

Applying systematic exploration...

- Lack of effective historical drilling
 - *New targets generated from scratch*
- Stripped regolith profile beneath transported overburden = limited supergene Au halo
 - *Tight drill spacing required*
- Presence of hard silcrete layer within transported material
 - *Need to make sure every drill hole reaches weathered basement*
- Potential for in-situ and transported Au
 - *Use pathfinders (**Ag**, As, Sb, W) to discriminate **bedrock** vs **placer** Au*



Gold occurs at interface between residual and transported

(Johnson and McQueen, 2001)

Gidji JV – Next Steps

Marylebone

- Infill aircore and extend to NW
- Extend ground magnetic survey
- RC/DDH drilling

Southern Targets

- Soil sampling over “The Jog”
- Infill aircore (Railway)
- RC drilling (Piccadilly/Railway/The Jog)

Northern Targets (new tenements)

- First pass aircore drilling along Boorara Shear Zone



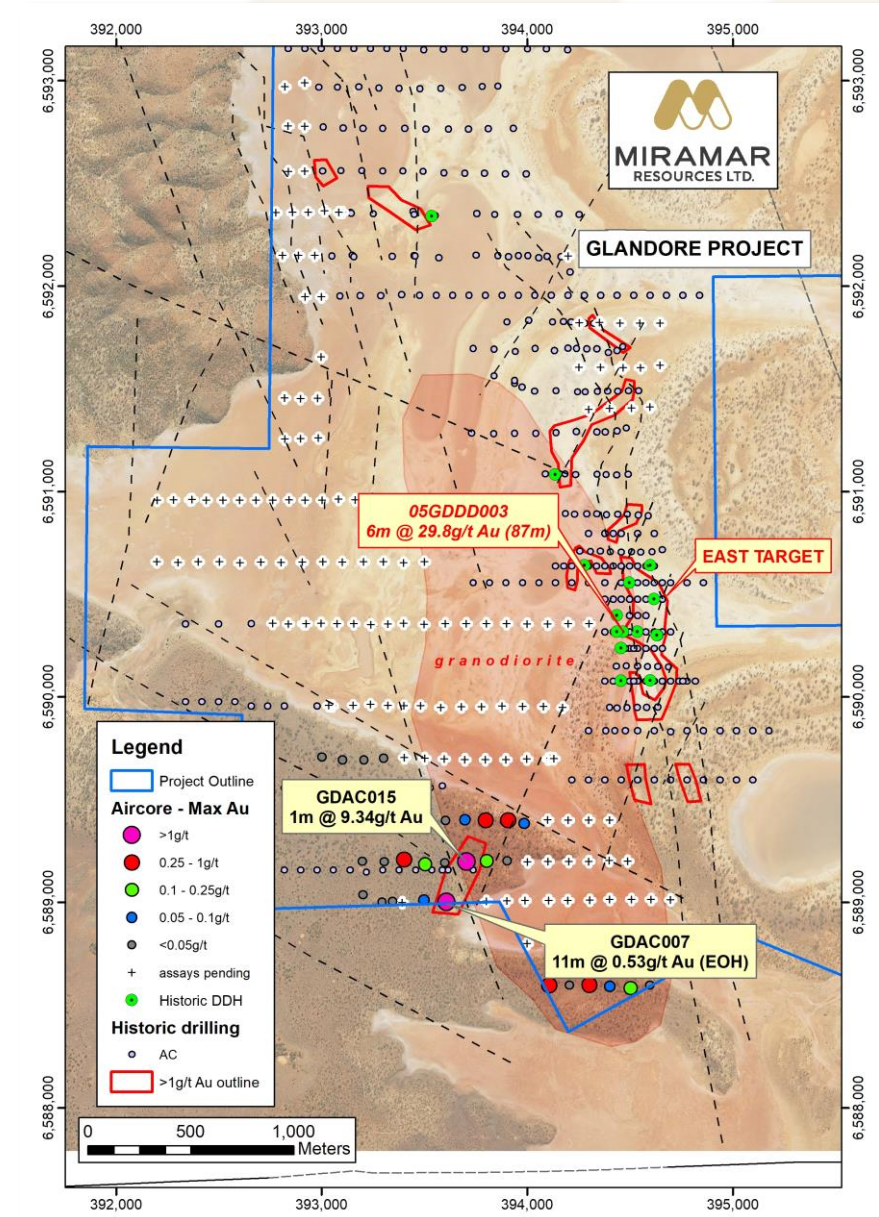
Glandore

- **100% owned** project **40km E of Kalgoorlie**
- Close to existing/proposed gold mining/processing infrastructure
- Underexplored due to lake cover
- Similar geological setting to
 - **Majestic** (0.48Moz)
 - Trojan (0.12Moz)



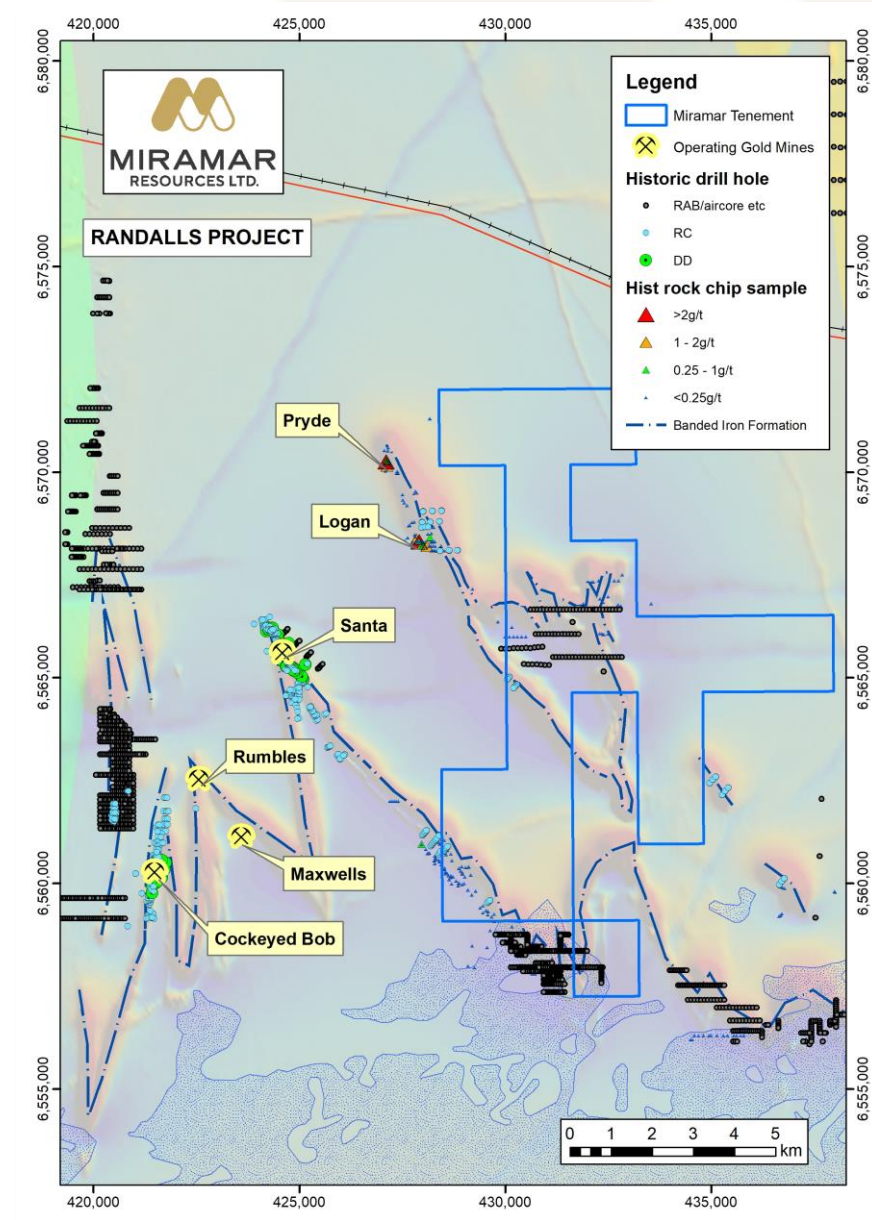
Glandore

- Layered mafic complex intruded by granodiorite
- **>2.5km** regolith gold anomaly with **several historic aircore/RAB holes >1g/t Au**
- DDH east of granodiorite
 - Bedrock results up to **6m @ 29.8g/t Au**
 - NE striking/W-dipping veins
- Drilling south of lake outlines **600m long aircore anomaly >0.25g/t Au**
 - Up to **1m @ 9.34g/t Au**
 - NE trending – towards high-grade DDH hits
- Lake drilling completed – **assays pending**



Randalls

- **E25/596** recently granted
- Located **70km E of Kalgoorlie**
- Folded BIF adjacent to **1.5Moz “Mt Belches”** gold operations (SLR)
- High-grade rock chips along strike at “Pryde” and “Logan” prospects
- Poorly explored with minimal drilling of BIF fold hinges
- Aircore +/- RC drilling planned



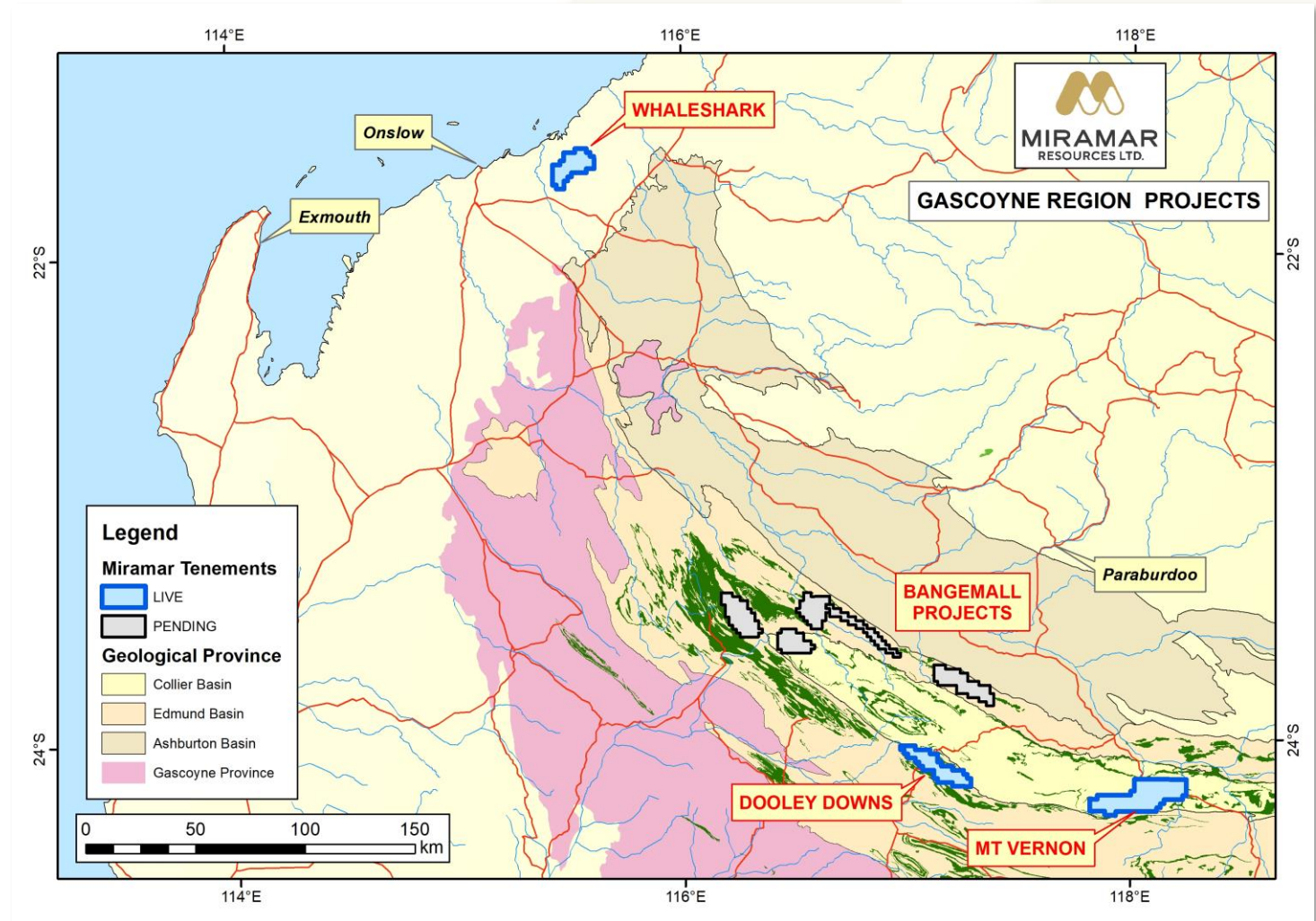
Additional discovery opportunities

Murchison region

- **Lang Well/Lakeside** – Underexplored greenstone belts near Deflector and Dalgara

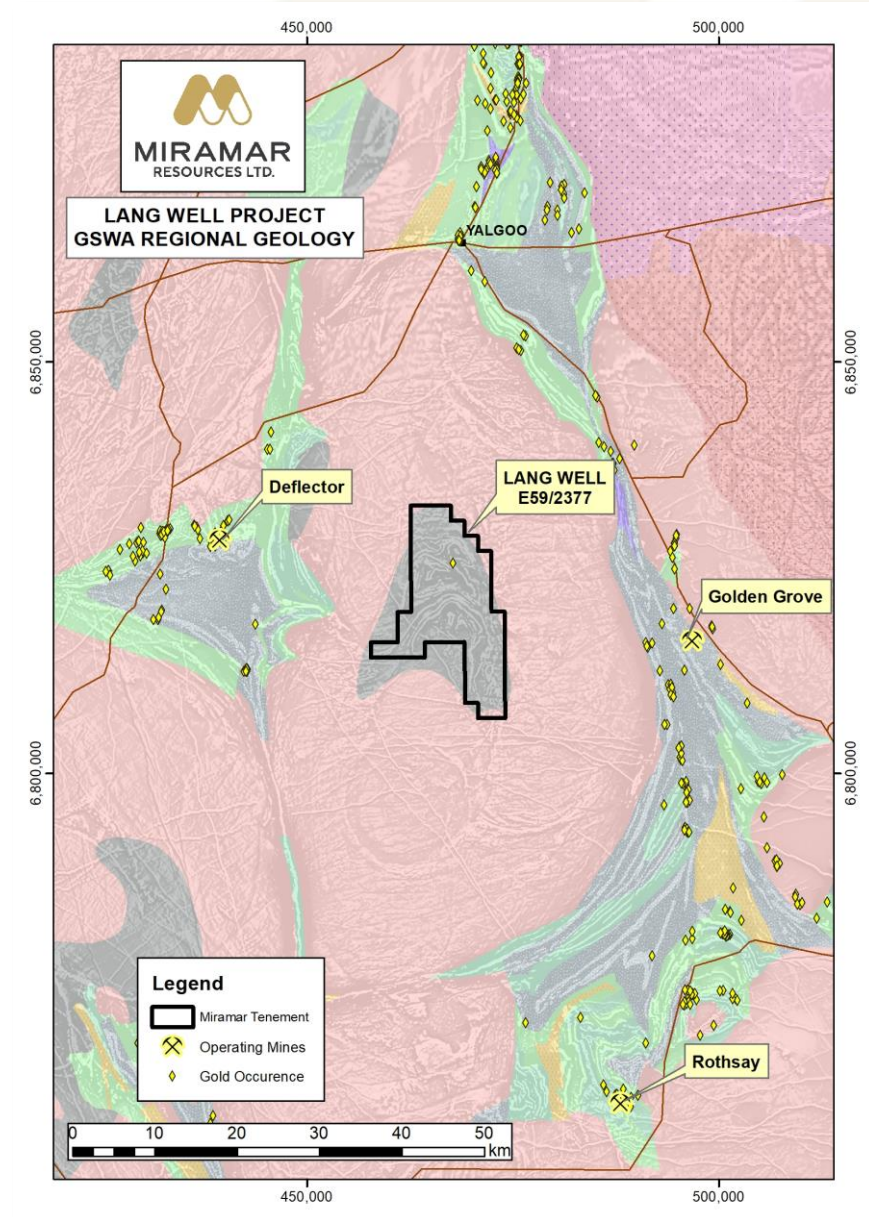
Gascoyne region

- **Whaleshark** - folded BIF under Carnarvon Basin
- **Bangemall Projects** - Strategic landholding in emerging **Ni-Cu-PGE** province



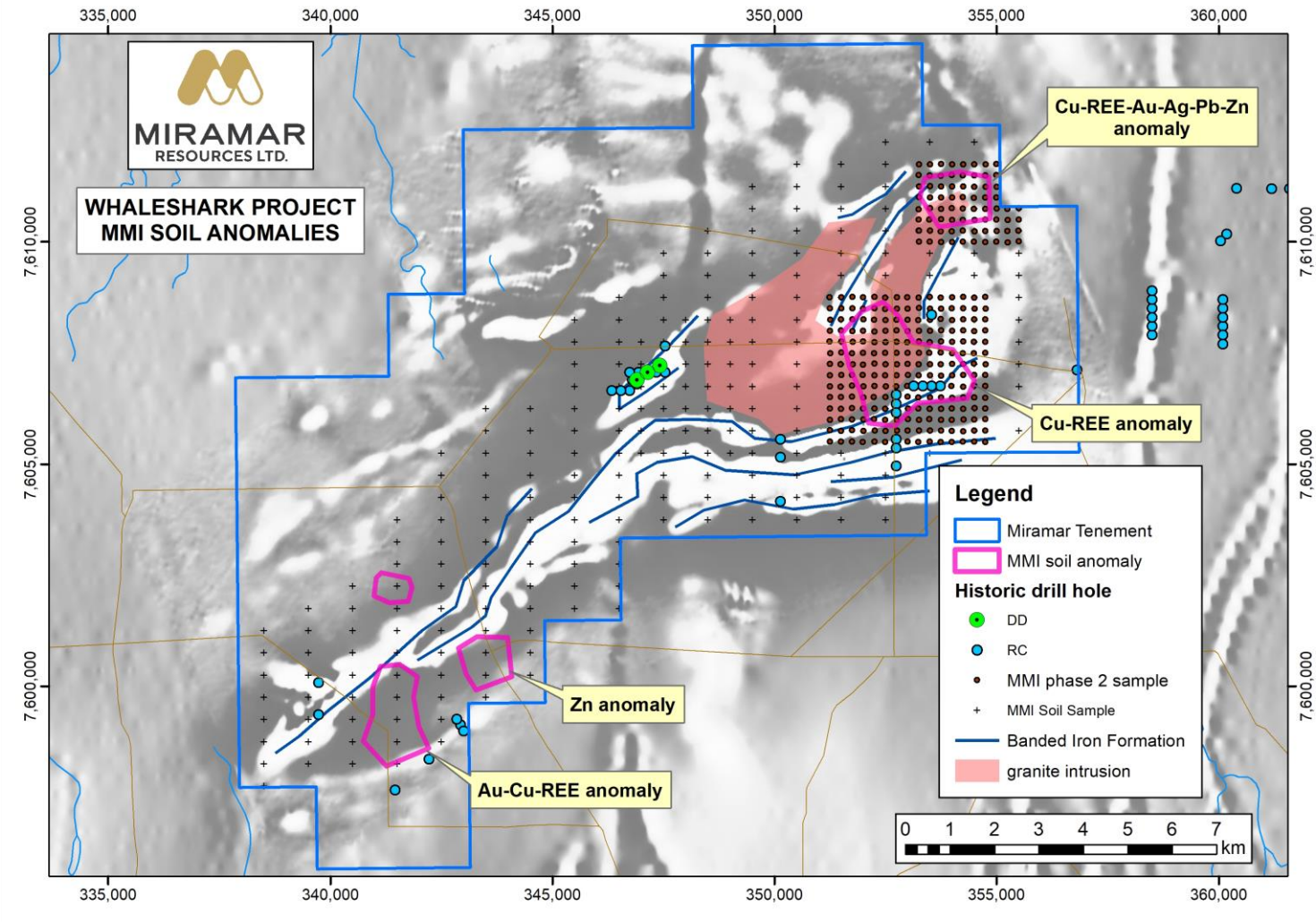
Lang Well

- Large underexplored greenstone belt between Deflector and Rothsay gold operations
- Historic rock chips up to **16g/t Au** in northern outcropping portion of belt
- Multiple untested 4-9km long auger Au anomalies
- Infill gravity survey helped refine thicker greenstone remnants
- Aircore drilling planned for Q1 2022



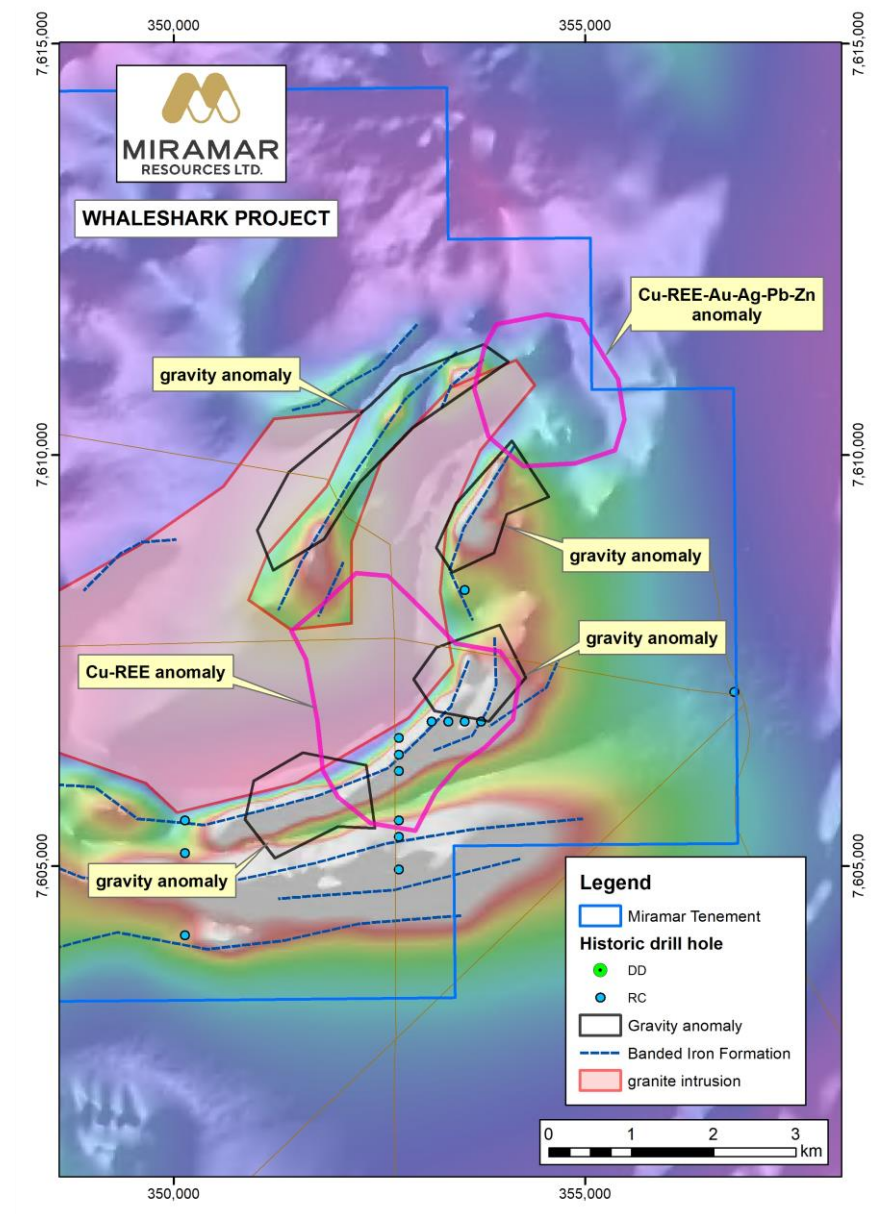
Whaleshark

- 30km E of Onslow, WA
- Folded BIF intruded by granite pluton
- Basement depth ~120m
- Prospective for **IOCG +/- BIF hosted Au**



Whaleshark

- Significant **IOCG** potential
- Overlapping magnetic/gravity anomalies at edge of granite intrusion
- Large Cu-REE (+/- Au-Ag) anomalies from 1000m x 500m spaced sampling
- Peak Cu value **4600ppb**
 - (Havieron 710ppb)
- Infill sampling completed (250m spacing)



Bangemall Projects

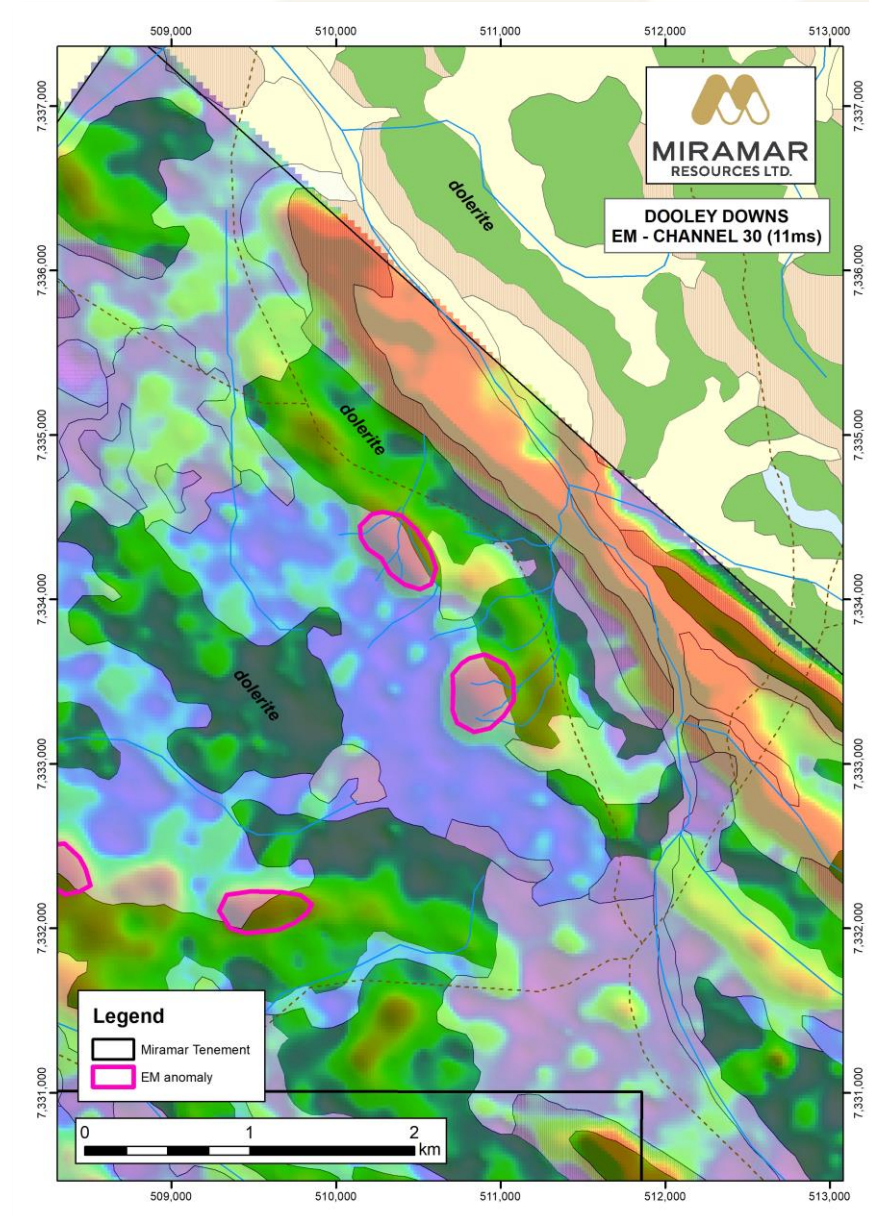
Mt Vernon

- Historic Ni-Cu-PGE soil anomalies
- EM survey planned for early 2022

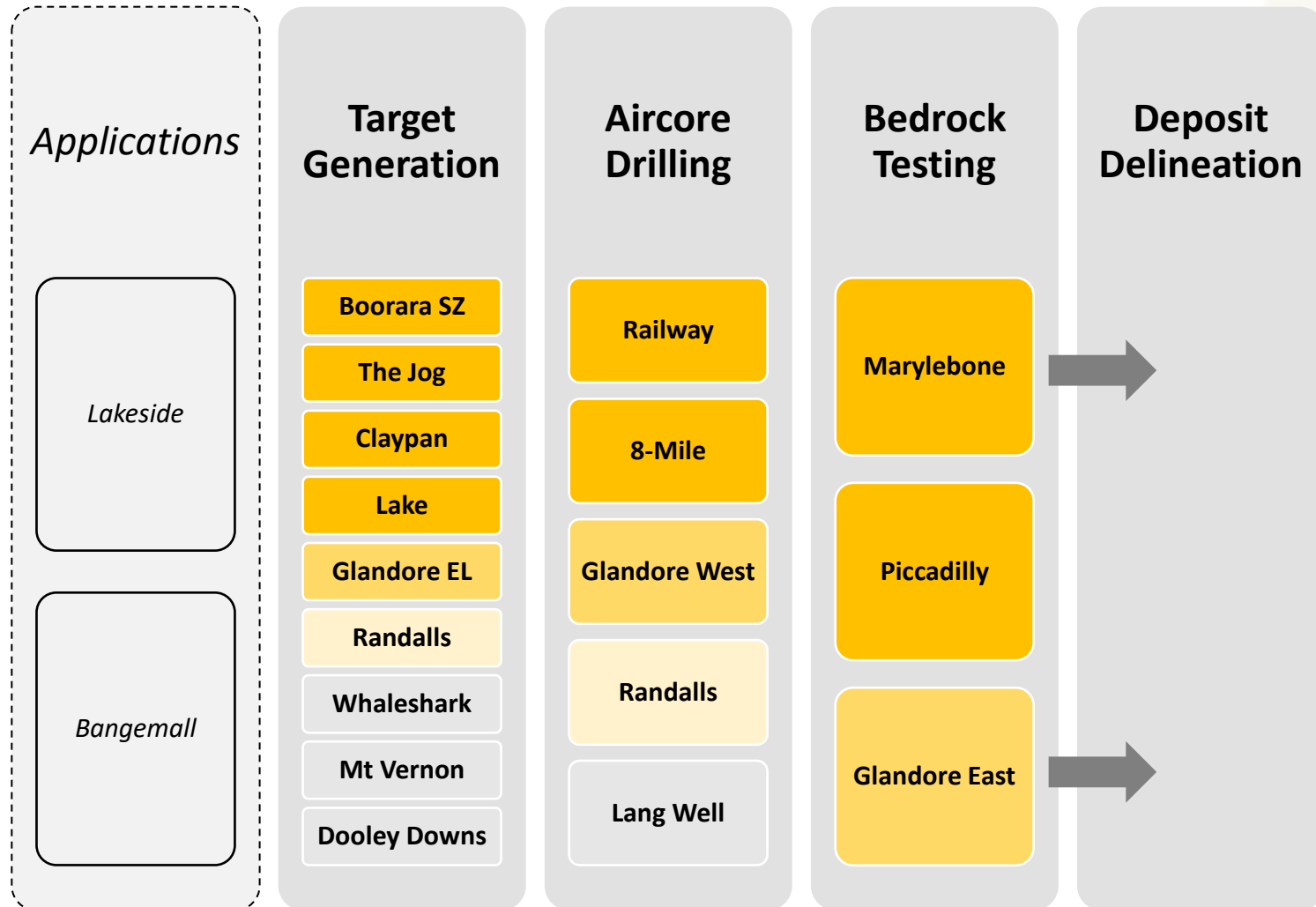
Dooley Downs

- **2km long target** adjacent to crustal-scale structure (= potential feeder zone)
- Proterozoic dolerite sills intruding into sediments (= potential sulphur source)
- **Late-time EM conductors** and **Cu mineralisation** in nearby quartz veins
- **No historic sampling over EM conductors**

Other applications awaiting grant



Project pipeline



Indicative 2021/22 work programme

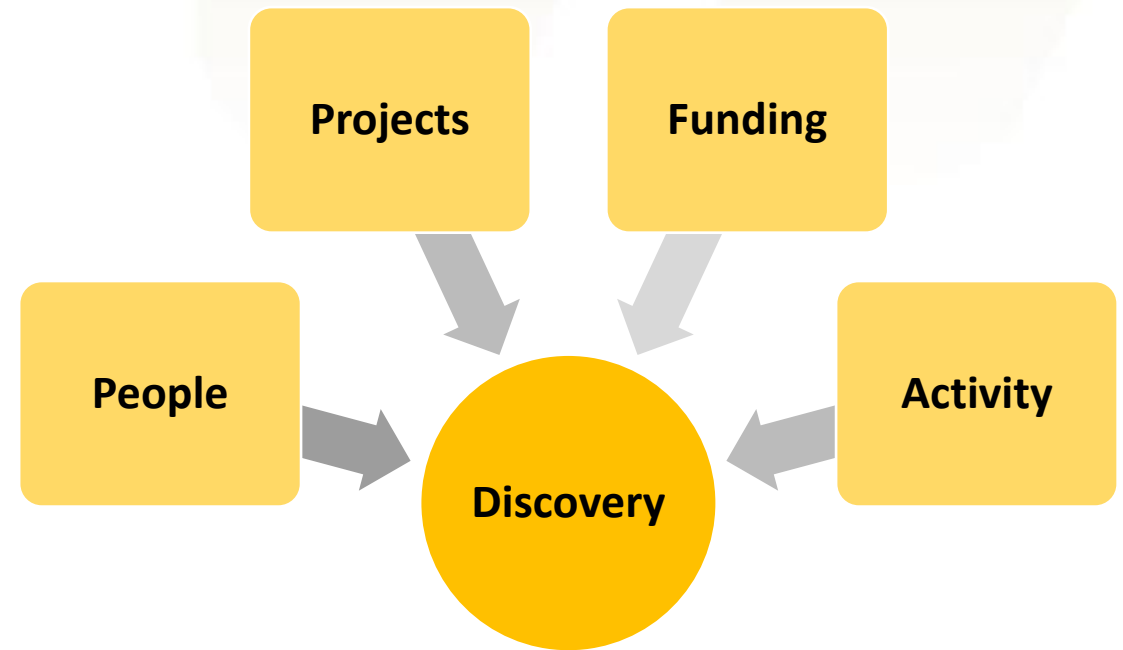
Region	Project	Sep 21 Qtr	Dec 21 Qtr	Mar 22 Qtr	Jun 22 Qtr
Eastern Goldfields	Gidji JV	Aircore			
				RC/DDH	
	Glandore	Aircore		Aircore	
				DDH	
	Randalls				Aircore/RC
Murchison	Lang Well			Aircore	
	<i>Lakeside</i>				
Gascoyne	Whaleshark	MMI sampling			Geophysics
	Mt Vernon			EM	
	Dooley Downs		Geochem		EM?
	<i>Bangemall</i>				

Summary

Since listing in **Oct 2020**, Miramar has:

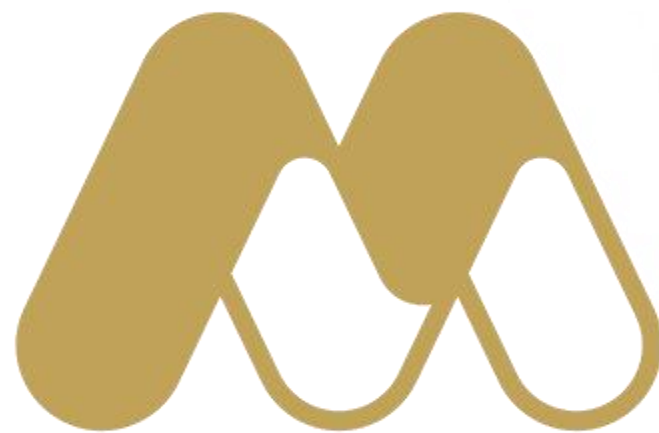
- Outlined multiple new targets at **Gidji** including a **potential large new gold discovery** at **Marylebone**
- Completed aircore drilling at **Glandore**
- Secured a strategic landholding in an emerging **Ni-Cu-PGE** province
- Outlined multiple large **IOCG** targets at **Whaleshark**
- Progressed numerous tenement applications to grant

Miramar has all the key ingredients to:
“create shareholder value through discovery”



Acknowledgements





miramarresources.com.au | ASX: **M2R**