



**MIRAMAR**  
RESOURCES LTD.

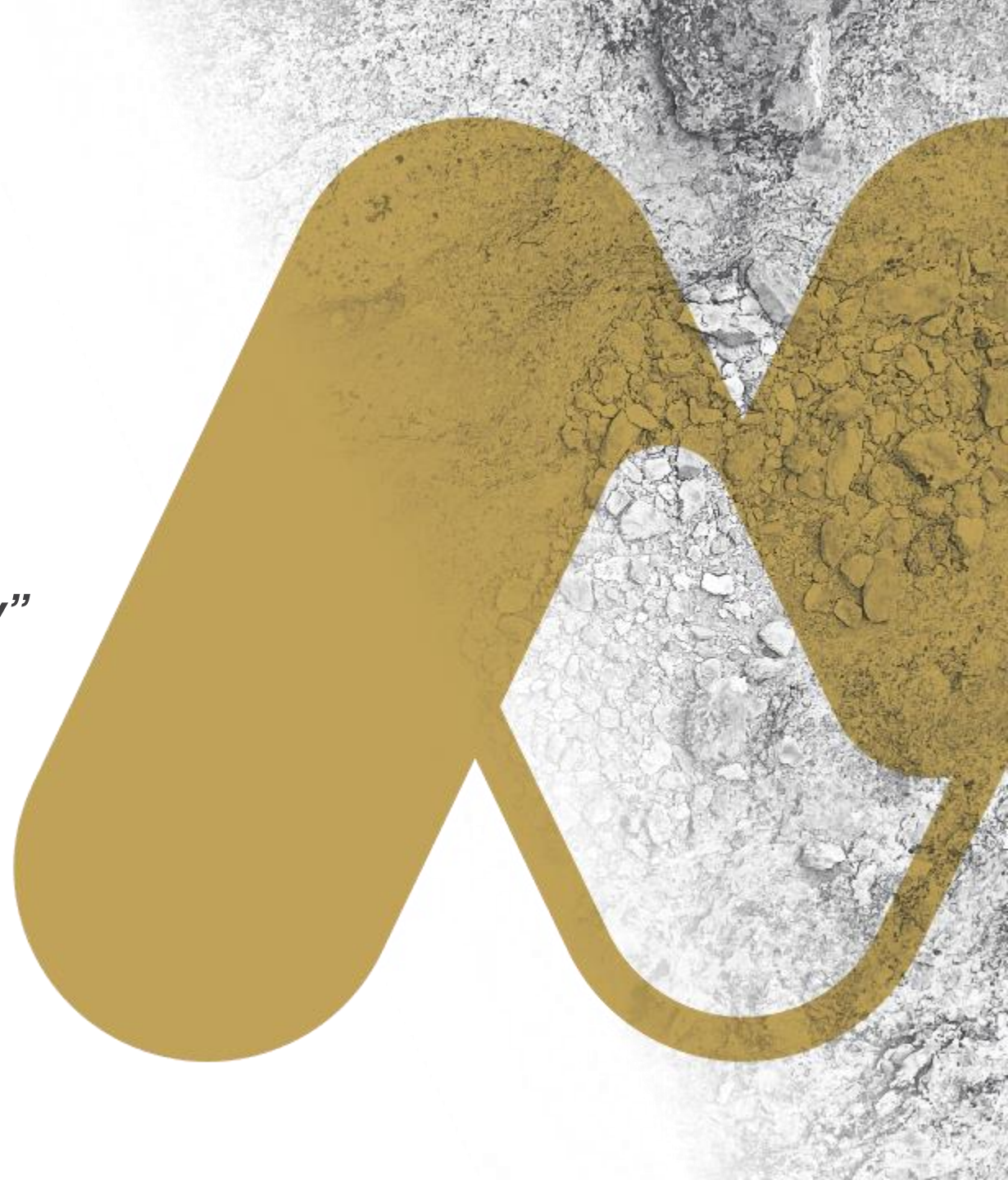
---

# Miramar Resources Ltd

*“Creating shareholder value through discovery”*

**DIGGERS AND DEALERS – AUGUST 2021**

ASX: **M2R**



# Disclaimer/Competent Person Statement

## **Forward-Looking Statements**

Statements in this presentation which are not statements of historical facts, including but not limited to those relating to the proposed transactions, are forward-looking statements. These statements instead represent management's current expectations, estimates and projections regarding future events.

Although management believes the expectations reflected in such forward-looking statements are reasonable, forward-looking statements are based on the opinions, assumptions and estimates of management at the date the statements are made and are subject to a variety of risks and uncertainties and other factors that could cause actual events or results to differ materially from those projected in the forward-looking statements. Accordingly, investors are cautioned not to place undue reliance on such statements.

## **Competent Person Statement**

The information in this report that relates to Exploration Targets or Exploration Results is based on information compiled by Allan Kelly, a “Competent Person” who is a Member of The Australian Institute of Geoscientists. Allan Kelly is the Executive Chairman of Miramar Resources Ltd. He is a full-time employee of Miramar Resources Ltd and holds shares and options in the company.

Allan Kelly has sufficient experience that is relevant to the style of mineralisation and type of deposits under consideration and to the activity being undertaken to Qualify as a “Competent Person” as defined in the 2012 Edition of the ‘Australasian Code for Reporting of Exploration Results, Mineral Resources and Ore Reserves’. Allan Kelly consents to the inclusion in this presentation of the matters based on his information and in the form and context in which it appears.

Information on historical results for all projects within this presentation, including JORC Table 1 and 2 Information, is included in the Miramar Resources Limited Prospectus dated 4 September 2020.



# Miramar Resources

- New **WA-focussed** mineral exploration company – listed on ASX Oct 2020
- Highly prospective gold projects in the **Eastern Goldfields** of WA
  - **Gidji JV**
  - **Glandore**
  - **Randalls**
- Additional discovery opportunities in the **Murchison** and **Gascoyne** regions
- Strategic land position in emerging **Ni-Cu-PGE** province
- Board **track record** of successful discovery, development and production



# Corporate Overview

Experienced Board	
<b>Allan Kelly</b> (Exec. Chairman)	<ul style="list-style-type: none"> <li>Geologist/Geochemist/Manager</li> <li><b>30 years experience</b> in mineral exploration, development and production (Australia/Nth America)</li> <li><b>Founding MD, Doray Minerals Ltd</b></li> <li><b>AMEC “Prospector” Award – 2014</b></li> </ul>
<b>Marion Bush</b> (Technical Director)	<ul style="list-style-type: none"> <li>Geologist/Analyst/Manager</li> <li><b>25+ years experience</b> in exploration, management, directorship and marketing within the UK, Australia, Africa, and South America</li> </ul>
<b>Terry Gadenne</b> (Non-Exec. Director)	<ul style="list-style-type: none"> <li>Rescue helicopter pilot and former Army and Navy Officer</li> <li><b>25+ years management experience</b> in the defence forces, aviation, agriculture and mining services</li> </ul>
<b>Mindy Ku</b> (Co. Sec/CFO)	<ul style="list-style-type: none"> <li>15+ years experience with public and private companies</li> </ul>

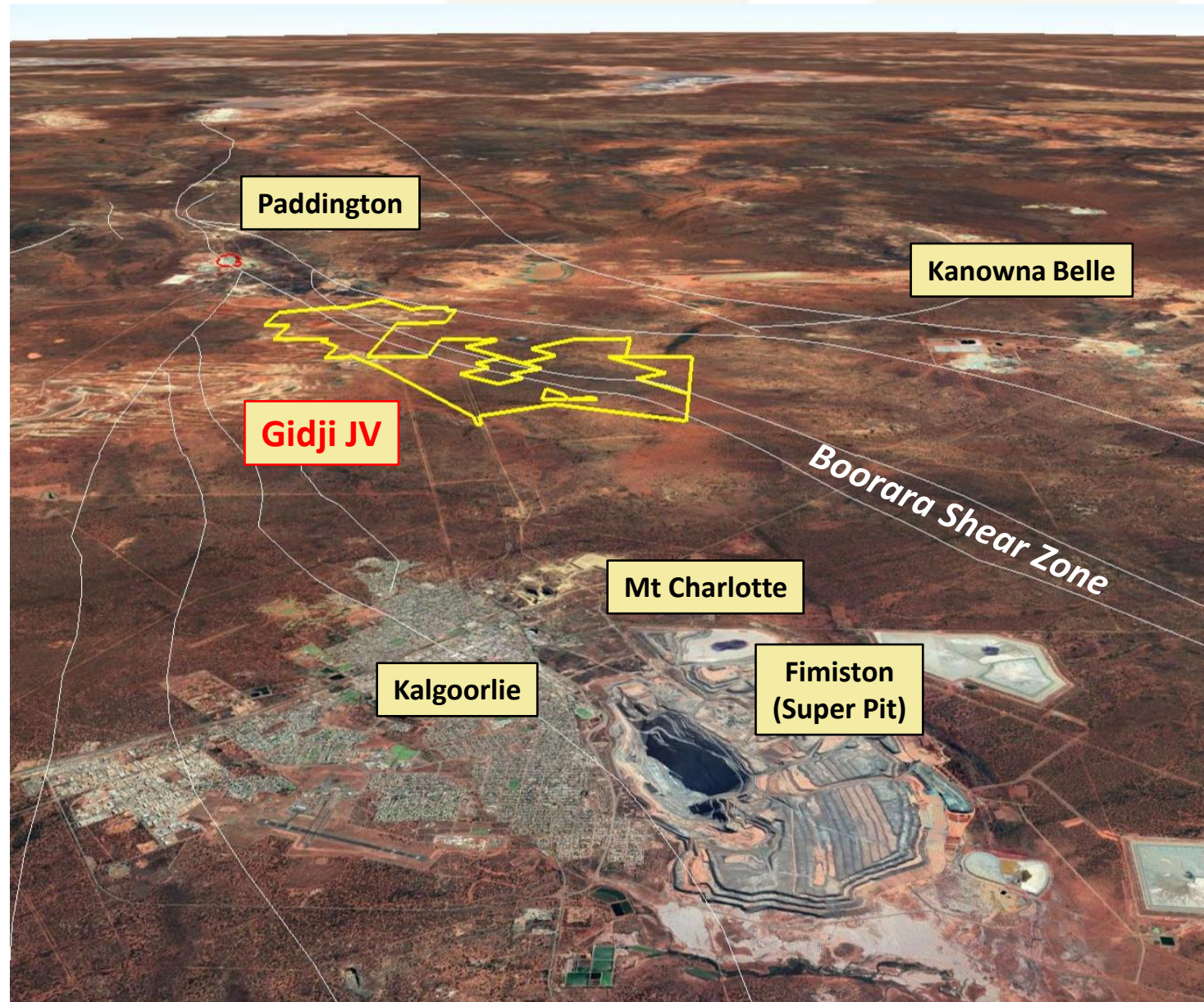
ASX Code	M2R
<b>Shares on Issue</b>	<b>55.1M</b>
• <i>incl. escrowed shares</i>	7.84M
Unlisted Options (20-48c)	17.3M
<b>Market Cap. (@ 18c)</b>	<b>\$10.0M</b>
<b>Cash (30 June 21)</b>	<b>\$5.0M</b>
Investments (SRI shares)	\$0.1M
Debt	nil
<b>Enterprise Value</b>	<b>\$4.9M</b>

Substantial Shareholders	%
XGS Pty Ltd (Allan Kelly)	12.2
<b>Top 20</b>	<b>40.0</b>
<b>Board/Management</b>	<b>13.2</b>



# Gidji JV (80%)

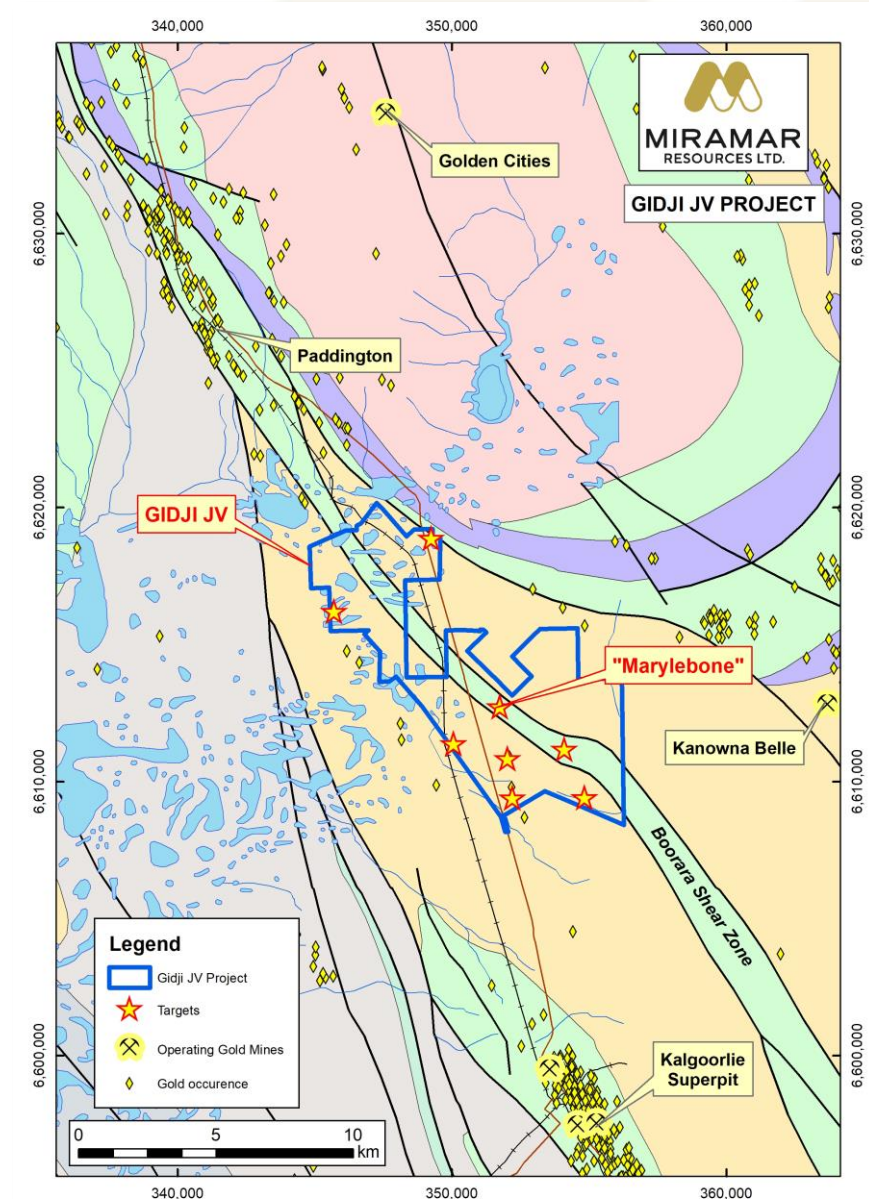
Potential for a large new gold discovery on Kalgoorlie's doorstep...





# Gidji JV (80%)

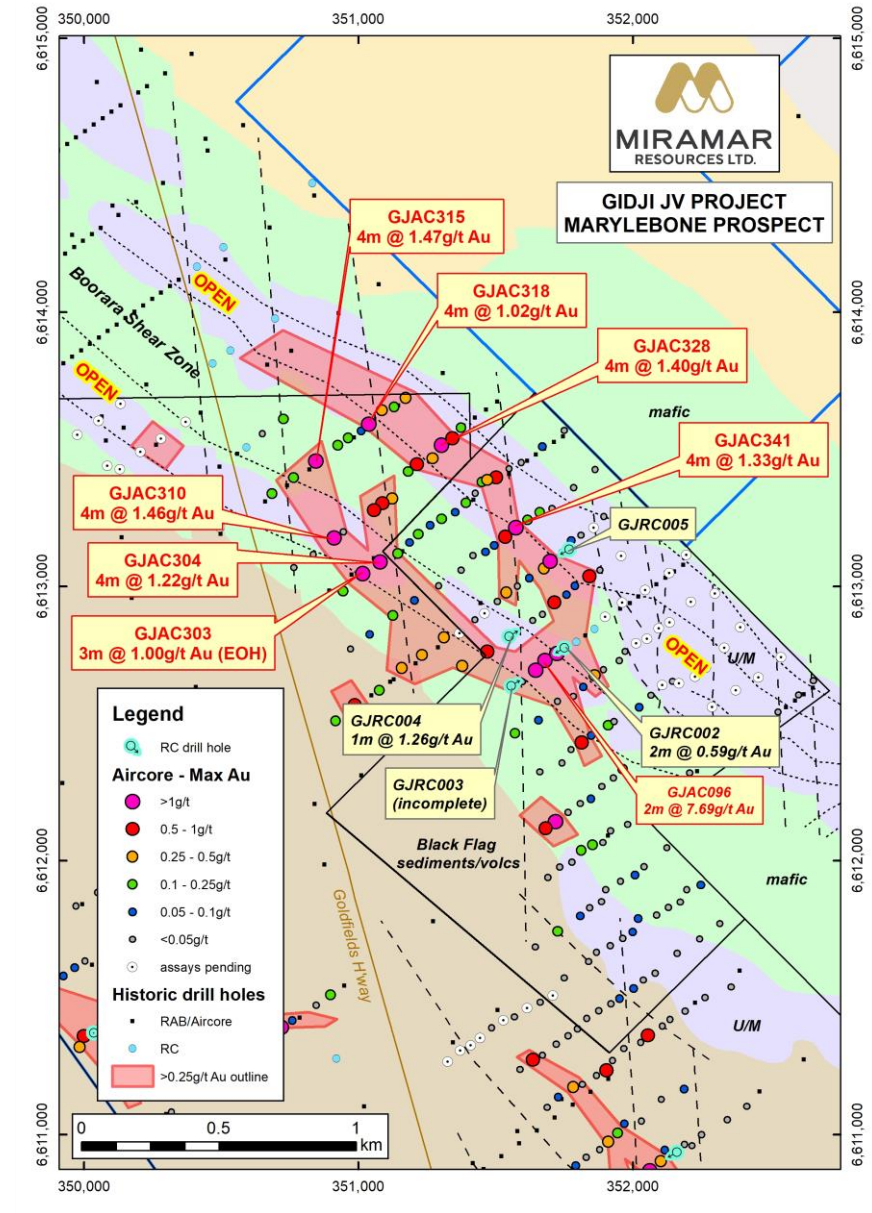
- Strategic land position located within major regional structure **15km north of Kalgoorlie**
- Along strike from large deposits
  - **Paddington (4 Moz prod'n)**
  - Boorara (0.45Moz)
  - Zoroastrian/Excelsior (0.88Moz)
- Previously underexplored with **minimal drilling >100m**
- Excellent access via Goldfields Highway
- Proximity to existing gold mining +/- processing operations
- 50% of project tenements still to be granted



# Marylebone

Similar geology, structure and scale to nearby 4Moz Paddington deposit

- Dilational jog in Boorara Shear Zone crosscut by late N-S structures
- 2km long aircore gold anomaly with multiple results  $>1\text{g/t Au}$  and up to **2m @  $7.69\text{g/t Au}$**
- Open along strike and untested at depth
- Recent ground magnetic survey helps refine local geology and structure
- Awaiting further results from Jul 21 aircore





# Paddington - multi-million ounce target

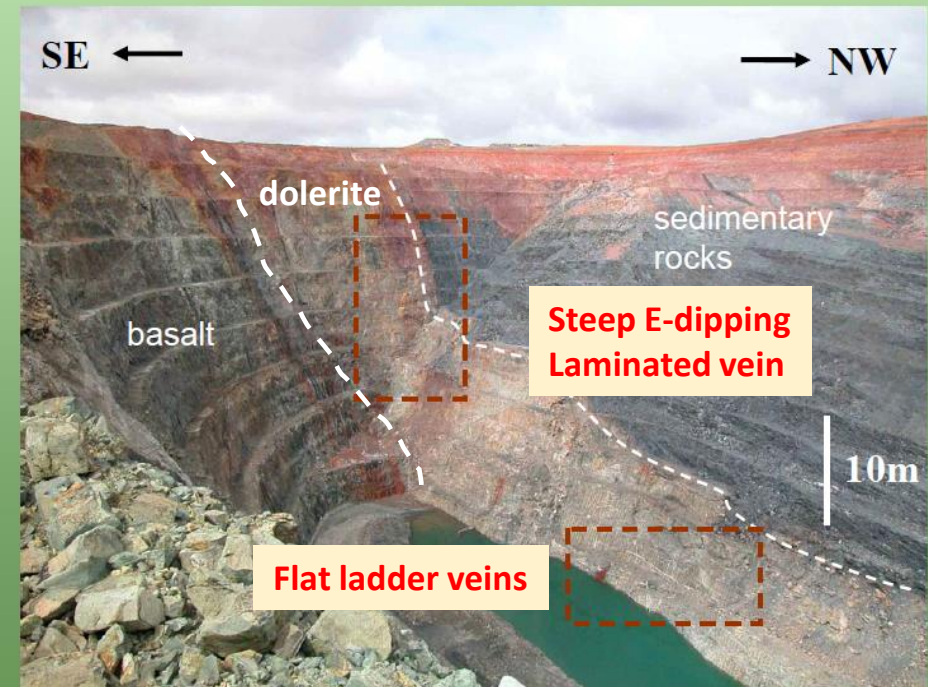
- **Produced 4Moz Au** since discovery in 1985
- Sinistral jog in Boorara Shear Zone cut by N-S structure
- Steep E-dipping laminated vein in dolerite host rock
- Flat-lying ladder veins
- 30m depletion zone over deposit

*Predictive Mineral Discovery*

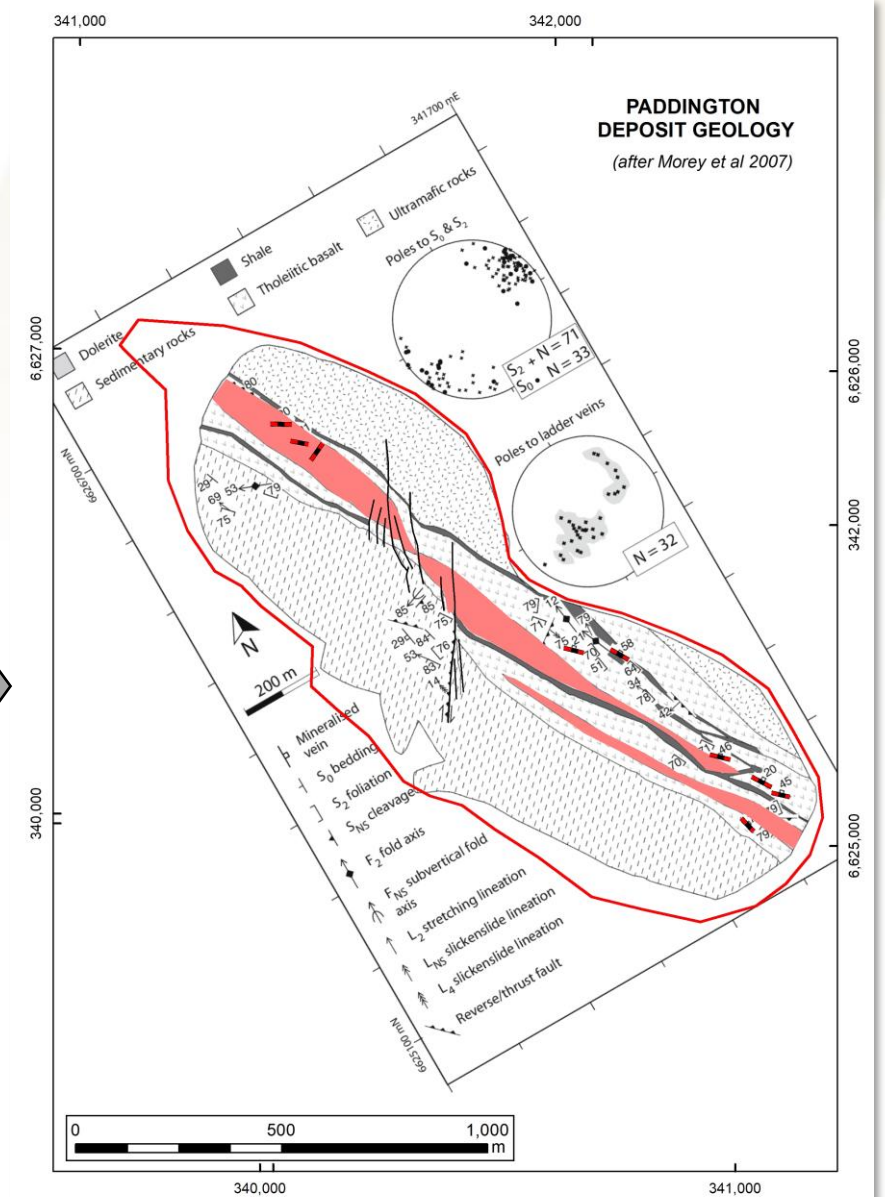
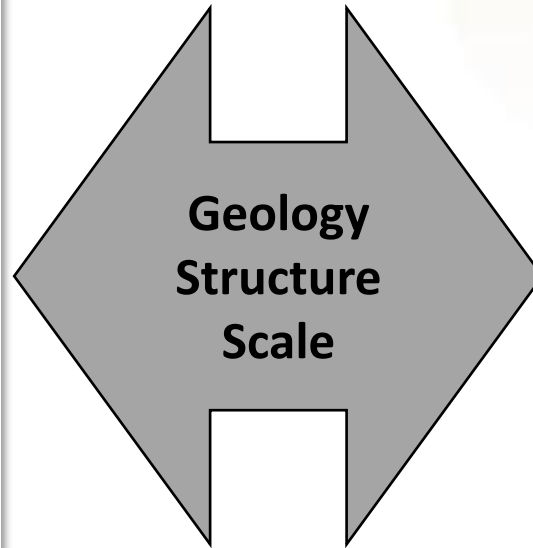
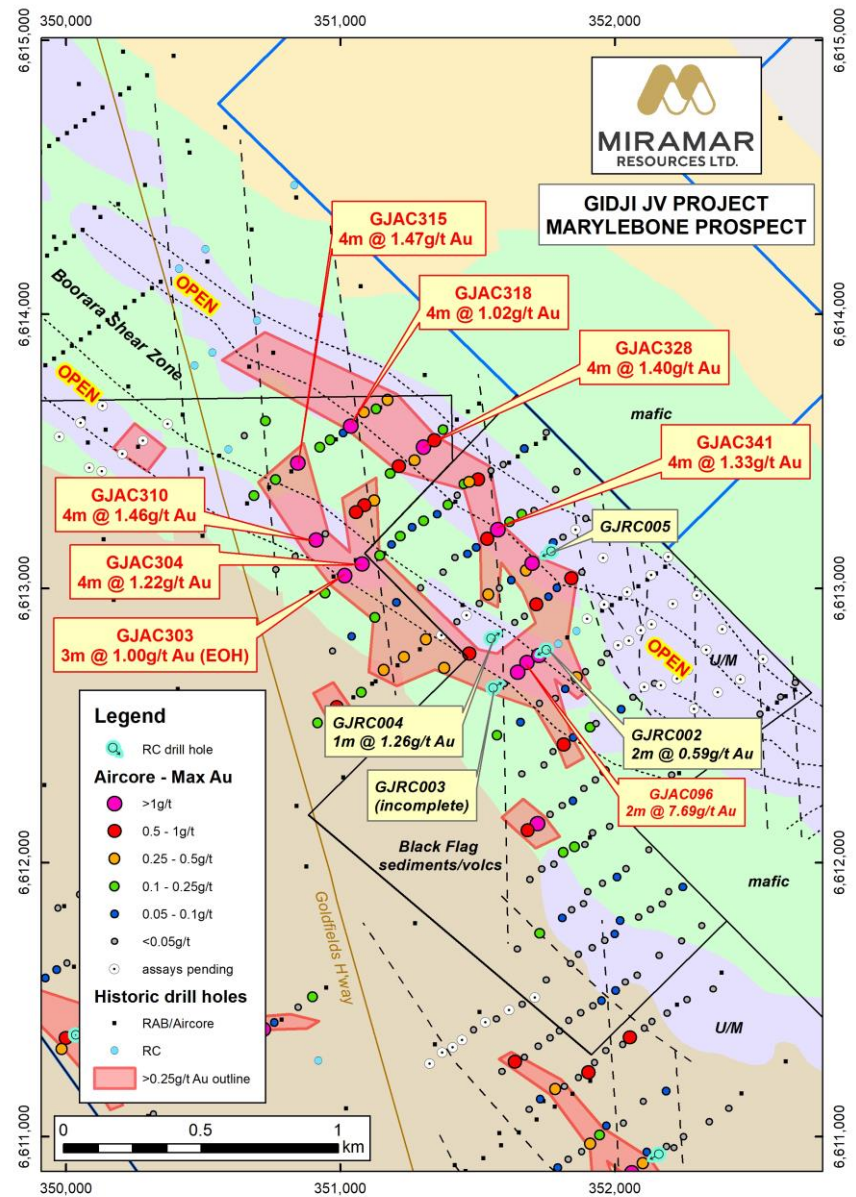
## Paddington



### Open pit looking south

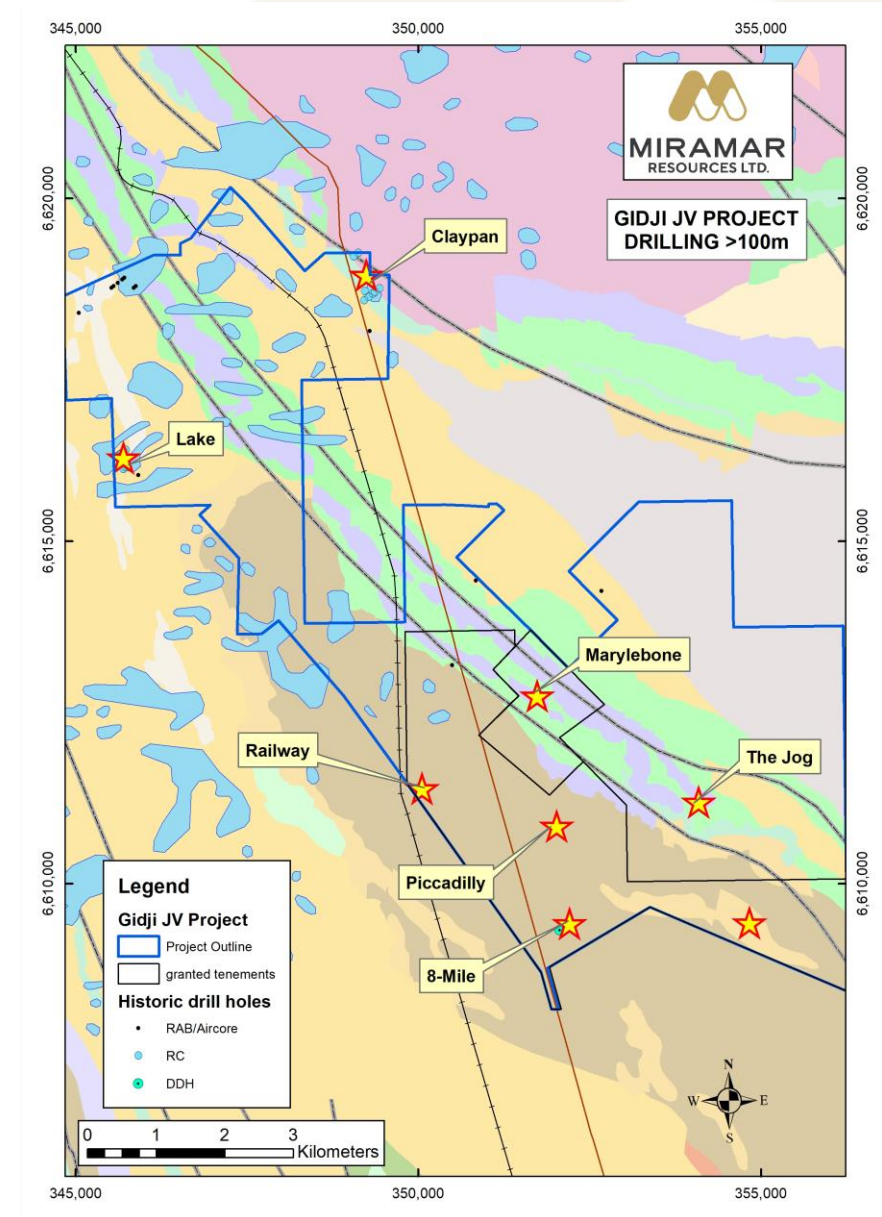






# Multiple targets

- **Underexplored land position**
  - Mostly shallow RAB/aircore holes
  - Average depth <50m
  - **Virtually no drilling >100m**
  - Paleochannel cover obscures prospective geology/structures
- Several additional targets on applications waiting to be granted
  - **The Jog** – large untested dilational jog in Boorara Shear Zone
  - **Lake** - sporadic RC drilling
  - **Claypan** – along strike from Kanowna Belle





# Glandore

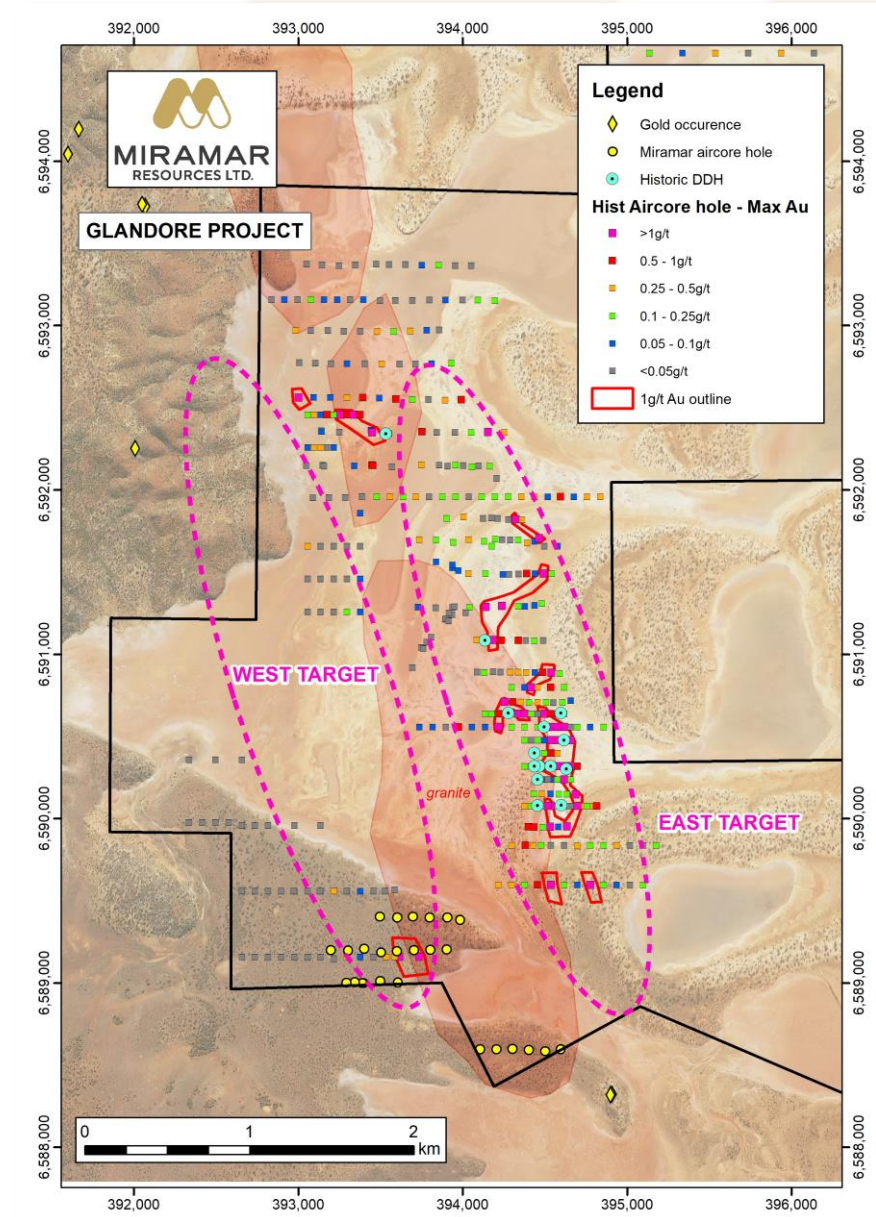
**Second underexplored gold project close to Kalgoorlie**





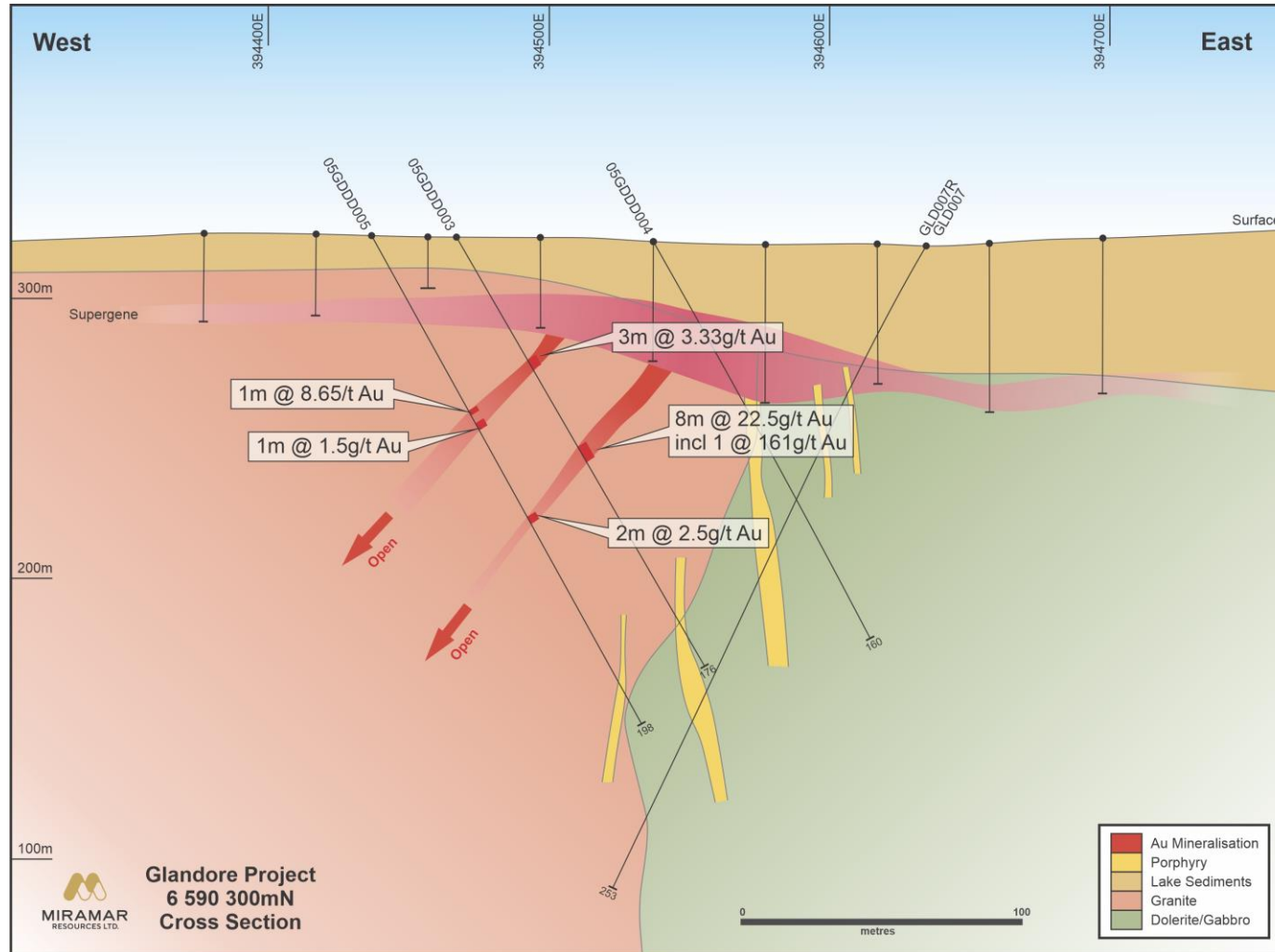
# Glandore

- Located **40km E of Kalgoorlie** - close to existing/proposed mining/processing infrastructure
- Layered mafic complex intruded by granite
- **East Target** – supergene Au mineralisation over **>2.5km** with **limited bedrock testing**
  - **8m @ 22.5g/t Au (DDH)**
  - **Open to south** for another 800m
- **West Target** – untested for **>2km**
  - Several historic aircore/RAB holes **>1g/t Au**
- Initial Aircore drilling completed south of Lake Yindarlgooda
- Lake aircore and DDH planned





# Glandore - East Target



- Widespread aircore gold anomalism at base of lake sediments
- West dipping quartz veins at granite/mafic contact
- Limited bedrock testing with shallow DDH
  - 8m @ 22.5g/t Au
  - 4m @ 3.12g/t Au
  - 5m @ 1.76g/t Au
- Open at depth and to south

# Additional Discovery Opportunities

## ■ Eastern Goldfields

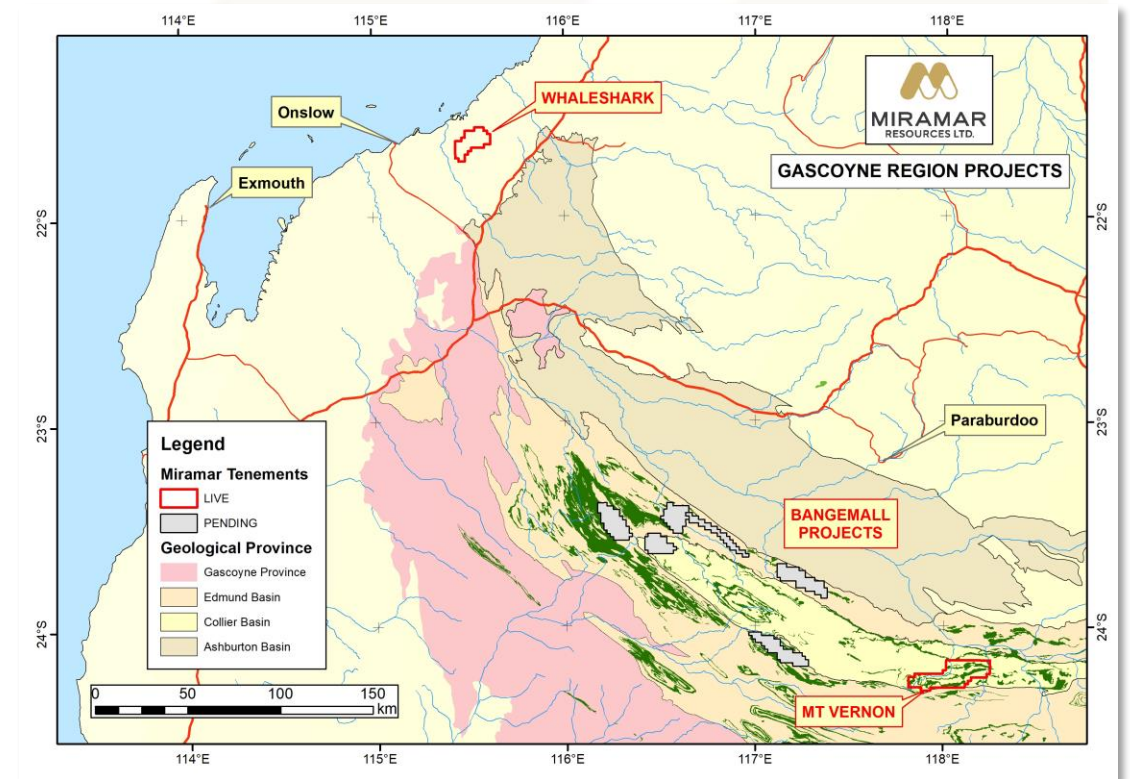
- **Randalls** –underexplored BIF adjacent to Mt Belches operations

## ■ Murchison

- **Lang Well** – Underexplored greenstone belt between Deflector, Golden Grove and Rothsay

## ■ Gascoyne

- **Whaleshark** - Large folded BIF under Carnarvon Basin sediments
  - MMI sampling completed
- **Bangemall** - Strategic landholding in emerging **Ni-Cu-PGE** province
  - EM survey planned





# Pipeline of high-quality drill targets

Region	Project	Tenement grant	Target Generation	Aircore drilling	Bedrock testing	Advanced Exploration
Eastern Goldfields	Gidji JV	The Jog Claypan Lake		Piccadilly Railway Marylebone 8-Mile		
	Glandore		Glandore			
	Randalls	Randalls				
Murchison	Lang Well		Lang Well			
	Lakeside	Lakeside				
Gascoyne	Bangemall	various	Mt Vernon			
	Whaleshark		Whaleshark			

# 2021 work programme/news flow

Region	Project	Mar 21 Qtr	Jun 21 Qtr	Sep 21 Qtr	Dec 21 Qtr
Eastern Goldfields	Gidji JV		magnetics		
		Aircore			
			RC		
		DDH			DDH
	Glandore		gravity		
				Aircore/Lake drilling	
					DDH
	Randalls			Tenement grant?	Aircore/RC?
Murchison	Lang Well	gravity		Aircore	
	Lakeside				
Gascoyne	Whaleshark			Geochem	
	Mt Vernon			Airborne EM	
	Bangemall		Tenement grant?	Geochem/GPX	
News flow		Results	Results	Results	Results



# Summary

Since listing in **Oct 2020**, Miramar has:

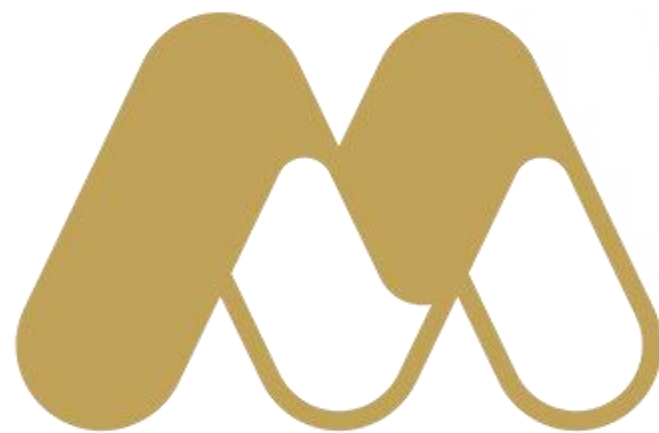
- Developed multiple new targets at **Gidji**
- Completed permitting and commenced drilling at **Glandore**
- Secured a strategic landholding in an emerging **Ni-Cu-PGE** province

Miramar has all the key ingredients to **create shareholder value through discovery**

- **People** - Track record of successful discovery, development and production
- **Projects** – Underexplored projects in world class locations
- **Funding** - Well funded after \$8M IPO
- **Activity** - ~70% of \$ goes into the ground







[miramarresources.com.au](http://miramarresources.com.au) | ASX: **M2R**