



MIRAMAR
RESOURCES LTD.

Miramar Resources Ltd

“Creating shareholder value through discovery”

GOLD COAST INVESTMENT SHOWCASE - JUNE 2021

ASX: M2R



Disclaimer/Competent Person Statement

Forward-Looking Statements

Statements in this presentation which are not statements of historical facts, including but not limited to those relating to the proposed transactions, are forward-looking statements. These statements instead represent management's current expectations, estimates and projections regarding future events.

Although management believes the expectations reflected in such forward-looking statements are reasonable, forward-looking statements are based on the opinions, assumptions and estimates of management at the date the statements are made and are subject to a variety of risks and uncertainties and other factors that could cause actual events or results to differ materially from those projected in the forward-looking statements. Accordingly, investors are cautioned not to place undue reliance on such statements.

Competent Person Statement

The information in this report that relates to Exploration Targets or Exploration Results is based on information compiled by Allan Kelly, a “Competent Person” who is a Member of The Australian Institute of Geoscientists. Allan Kelly is the Executive Chairman of Miramar Resources Ltd. He is a full-time employee of Miramar Resources Ltd and holds shares and options in the company.

Allan Kelly has sufficient experience that is relevant to the style of mineralisation and type of deposits under consideration and to the activity being undertaken to Qualify as a “Competent Person” as defined in the 2012 Edition of the ‘Australasian Code for Reporting of Exploration Results, Mineral Resources and Ore Reserves’. Allan Kelly consents to the inclusion in this presentation of the matters based on his information and in the form and context in which it appears.

Information on historical results for all projects within this presentation, including JORC Table 1 and 2 Information, is included in the Miramar Resources Limited Prospectus dated 4 September 2020.

Information relating to results for the Gidji JV project, including JORC Table 1 and 2 Information, is included in the following ASX Releases:

1 Feb 2021 – “GIDJI AIRCORE DRILLING OUTLINES 4KM MINERALISED STRUCTURE AND MULTIPLE TARGETS”

11 Feb 2021 – “HIGH-GRADE GOLD AT GIDJI UPGRADES TARGETS”

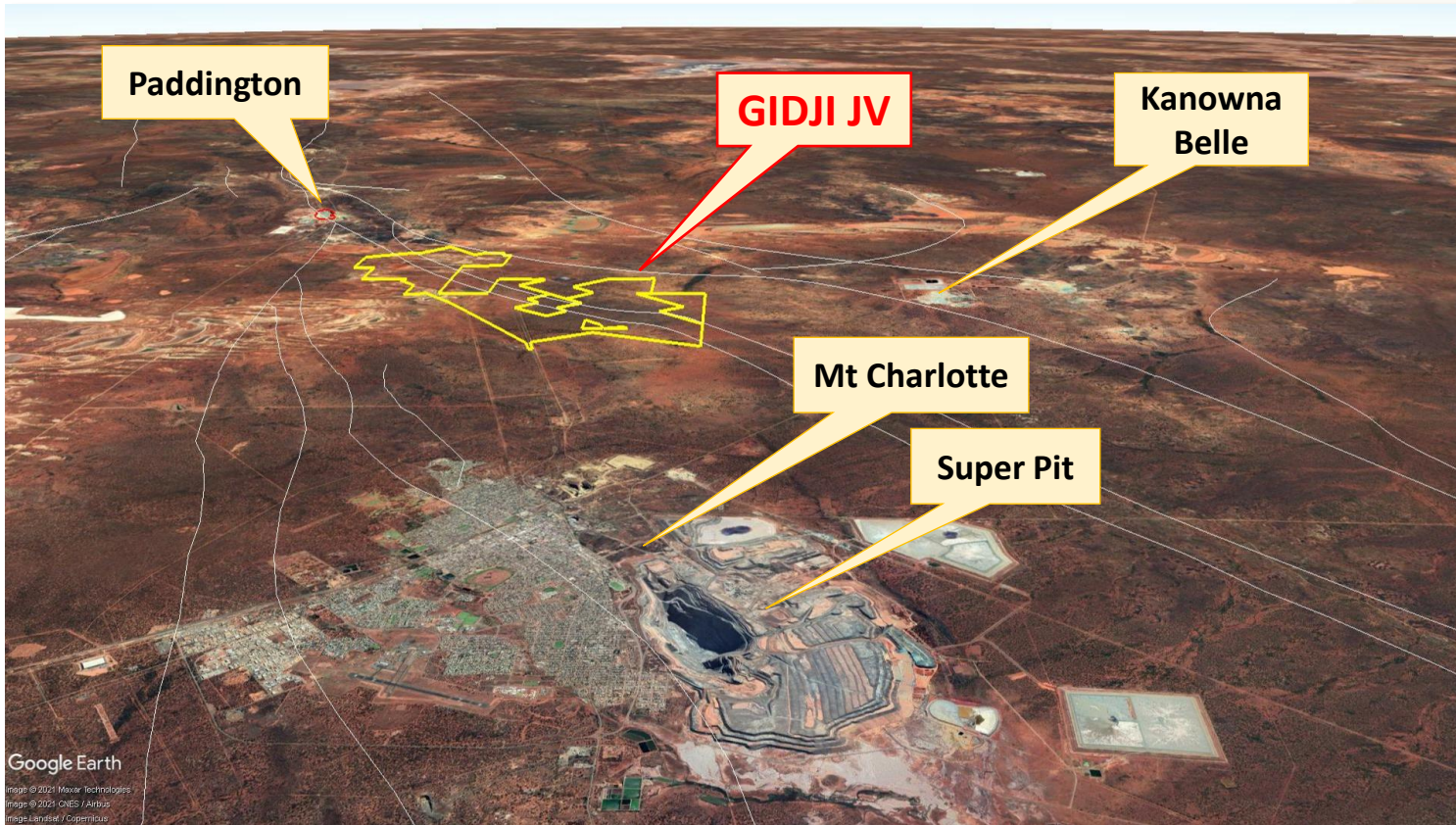
12 Apr 2021 – “GIDJI DRILLING EXTENDS RUNWAY AND HITS VISIBLE GOLD”

15 Apr 2021 – “GIDJI DIAMOND DRILLING – ADDITIONAL INFORMATION”

6 May 2021 – “GIDJI JV PROJECT - EXPLORATION UPDATE”

Miramar Resources Limited

“Exploring on Kalgoorlie’s doorstep”



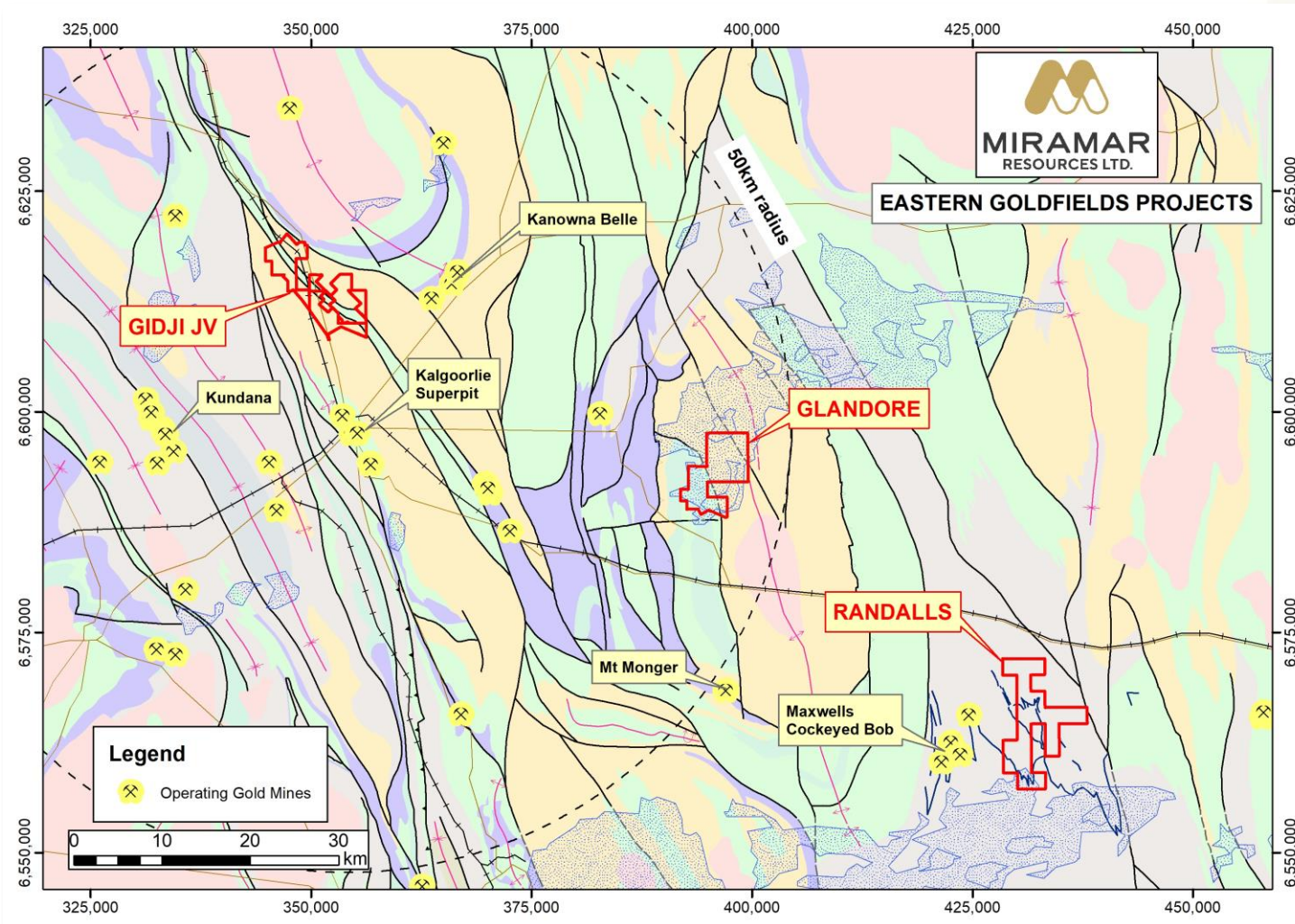
- **WA-focussed** mineral exploration company
- **Gidji JV** - potential for a new gold discovery in the **Eastern Goldfields**
- Additional discovery opportunities in the **Murchison** and **Gascoyne** regions
- Strategic land position in emerging **Ni-Cu-PGE** province
- **Track record** of discovery, development and production

Corporate Overview

ASX Code	M2R
Shares on Issue	55.1M
• <i>Incl. escrowed shares</i>	<i>7.84M</i>
Options (20-48c)	17.3M
Market Cap (@ 20c)	\$11.0M
Cash (31 March 21)	\$6.0M
Enterprise Value	\$5.0M
Substantial Shareholders	%
XGS Pty Ltd (Allan Kelly)	12.2
Top 20	40.0
Board	13.2

Experienced Board	
Allan Kelly (Executive Chairman)	<ul style="list-style-type: none"> Geologist/Geochemist/Manager 25+ years experience in mineral exploration, development and production in Aus and North America Founding MD, Doray Minerals Ltd AMEC “Prospector” Award - 2014
Marion Bush (Technical Director)	<ul style="list-style-type: none"> Geologist/Analyst/Manager 25+ years experience in exploration, management, directorship and marketing within the UK, Australia, Africa, and South America
Terry Gadenne (Non-Exec. Director)	<ul style="list-style-type: none"> Rescue helicopter pilot and former Army and Navy Officer 25+ years management experience in the defence forces, aviation, agriculture and mining services
Mindy Ku (Co. Sec/CFO)	<ul style="list-style-type: none"> 15+ years experience with public and private companies

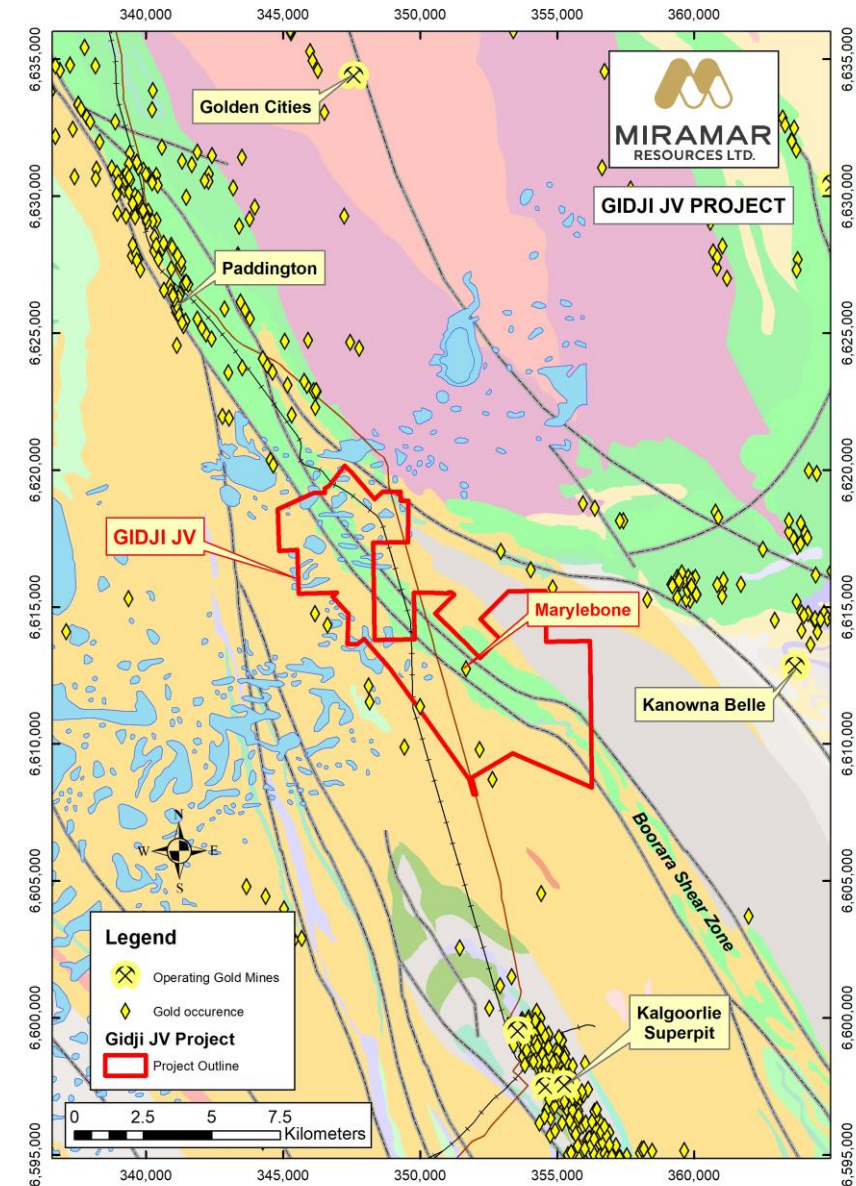
Eastern Goldfields Projects



- 3 Underexplored projects near existing mining and processing operations:
 - **Gidji JV (80%)** – potential for a large new gold discovery close to Kalgoorlie
 - **Glandore** – >2km long zones of underexplored gold mineralisation
 - **Randalls** – underexplored folded BIF adjacent to Silver Lake gold operations

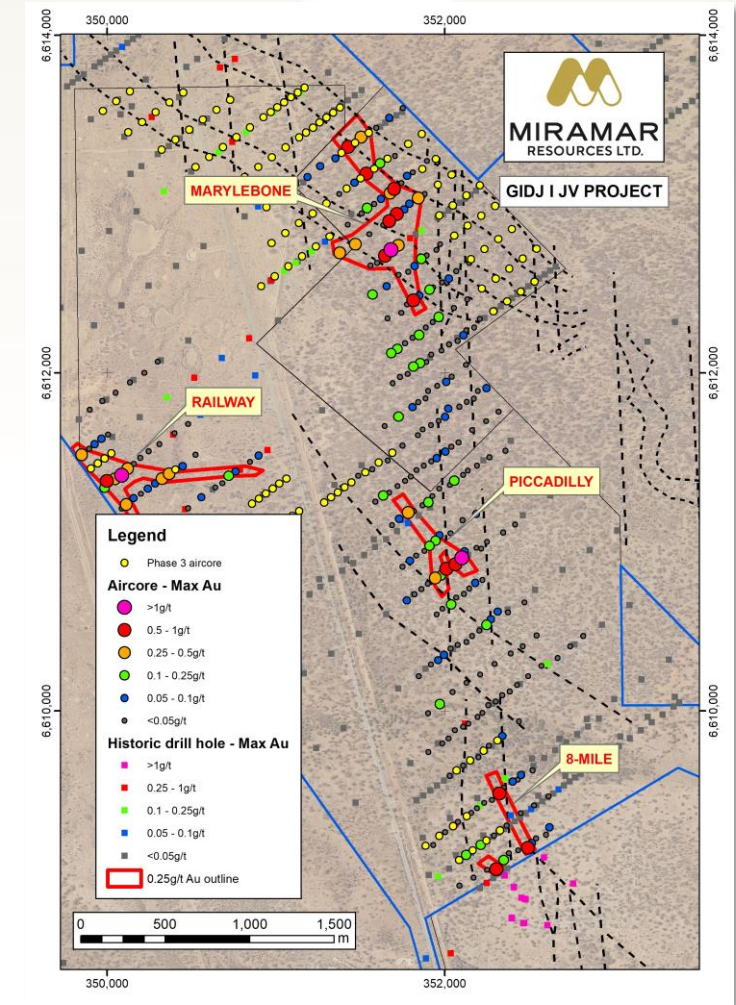
Gidji JV (80%)

- Strategic location **15km N of Kalgoorlie**
- **15km segment** of major regional structure along strike from major deposits
 - **Paddington (10 Moz)**
 - Boorara (0.45Moz)
 - Zoroastrian/Excelsior (0.88Moz)
- **Previously underexplored**
 - Mostly shallow RAB/aircore
 - Most holes angled and <50m
 - Paleochannel cover obscures prospective geology
- Excellent access via major highway
- Proximity to mining/processing operations

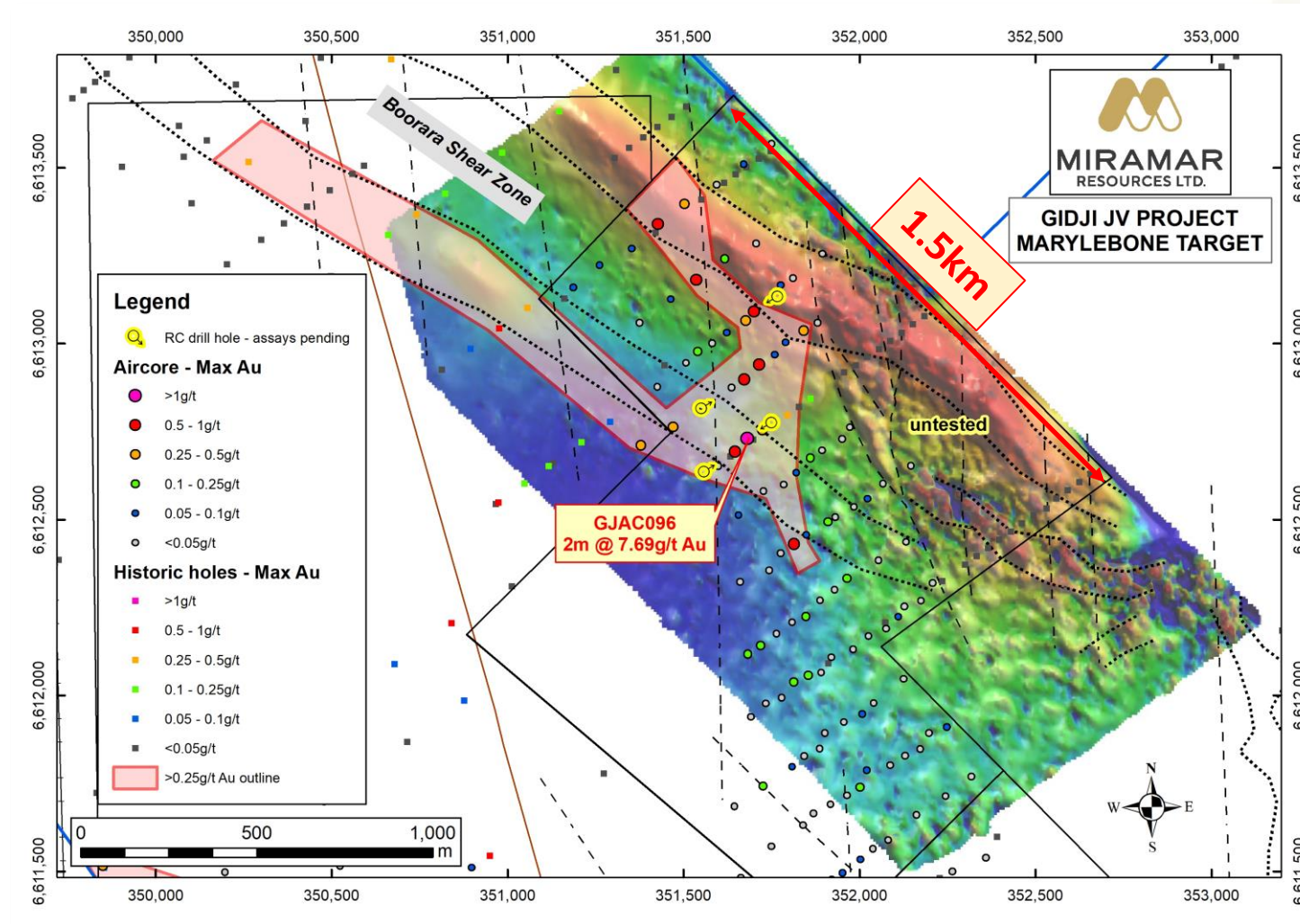


Gidji - Progress to date

- Dec 20 – Aircore drilling outlined several large new targets:
 - **Marylebone (2m @ 7.69g/t Au)**
 - **Railway**
 - **Piccadilly (1m @ 4.53g/t Au)**
 - **8-Mile**
- Mar/Apr 21
 - Phase 2 aircore upgraded and extended targets
 - DDH intersected **high-grade gold** at **8-Mile** target
- May/Jun 21
 - Ground mags completed over **Marylebone**
 - RC drilling and Phase 3 aircore – awaiting assays

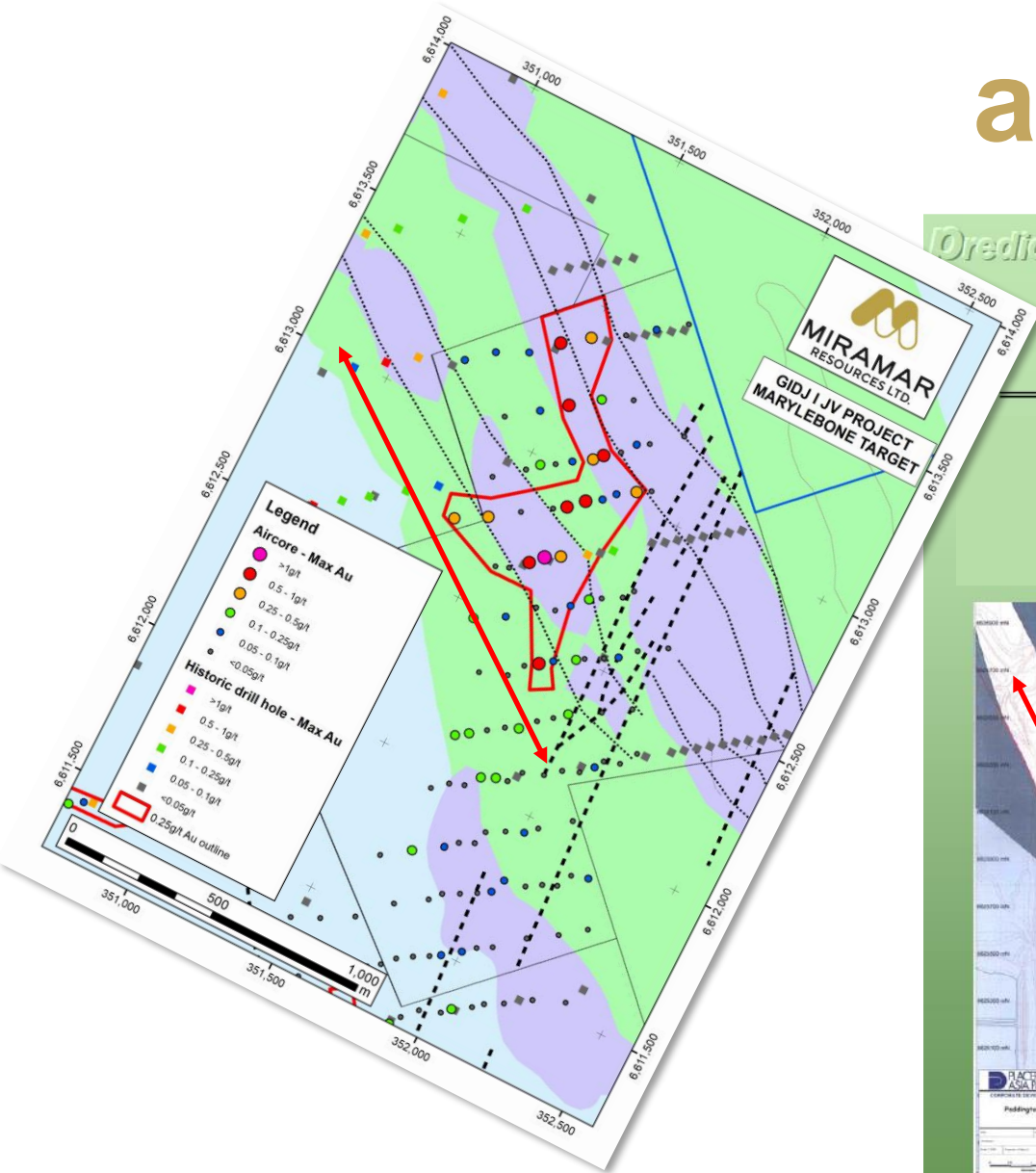


Marylebone – high priority target



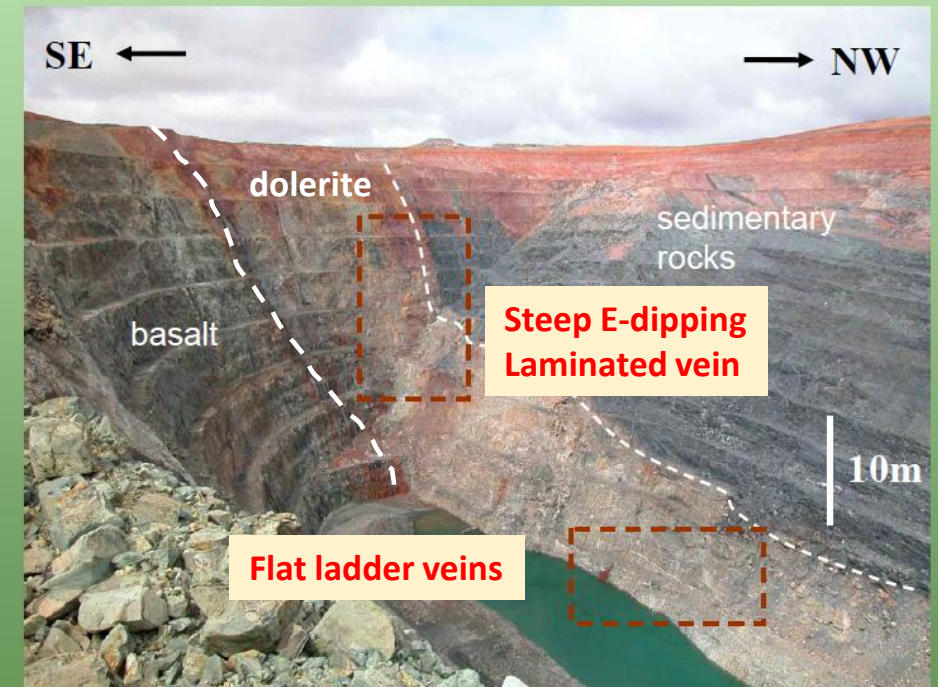
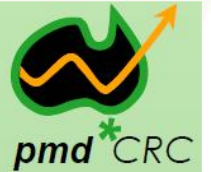
- Geology, structure and scale similar to nearby Paddington deposit
- >1.5km aircore anomaly with **high-grade gold**
 - (2m @ 7.69g/t Au)
- **Open along strike**
- Ground magnetic survey helps refine local geology and structure
- RC and Phase 3 aircore drilling completed
 - awaiting assays

a Paddington lookalike?

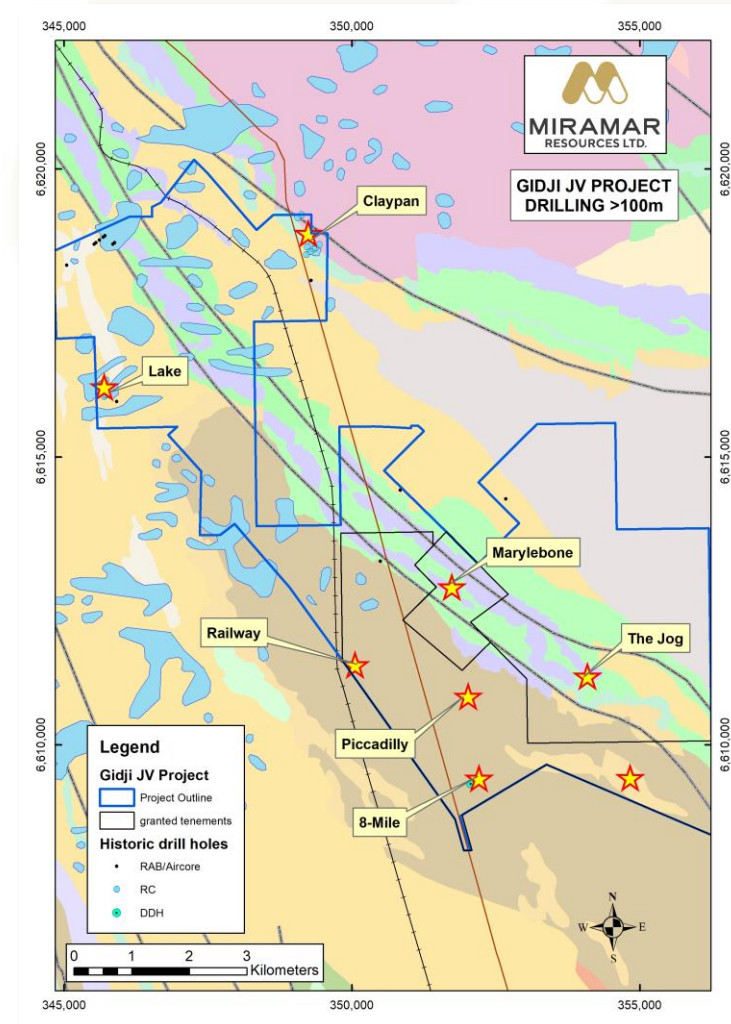
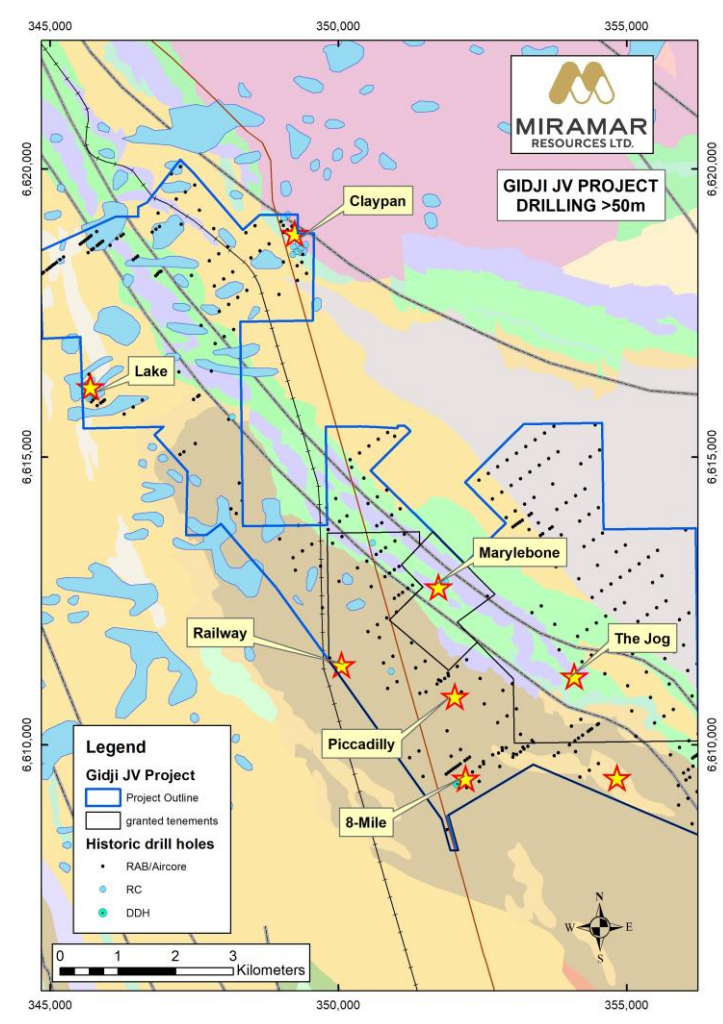


Predictive Mineral Discovery

Paddington

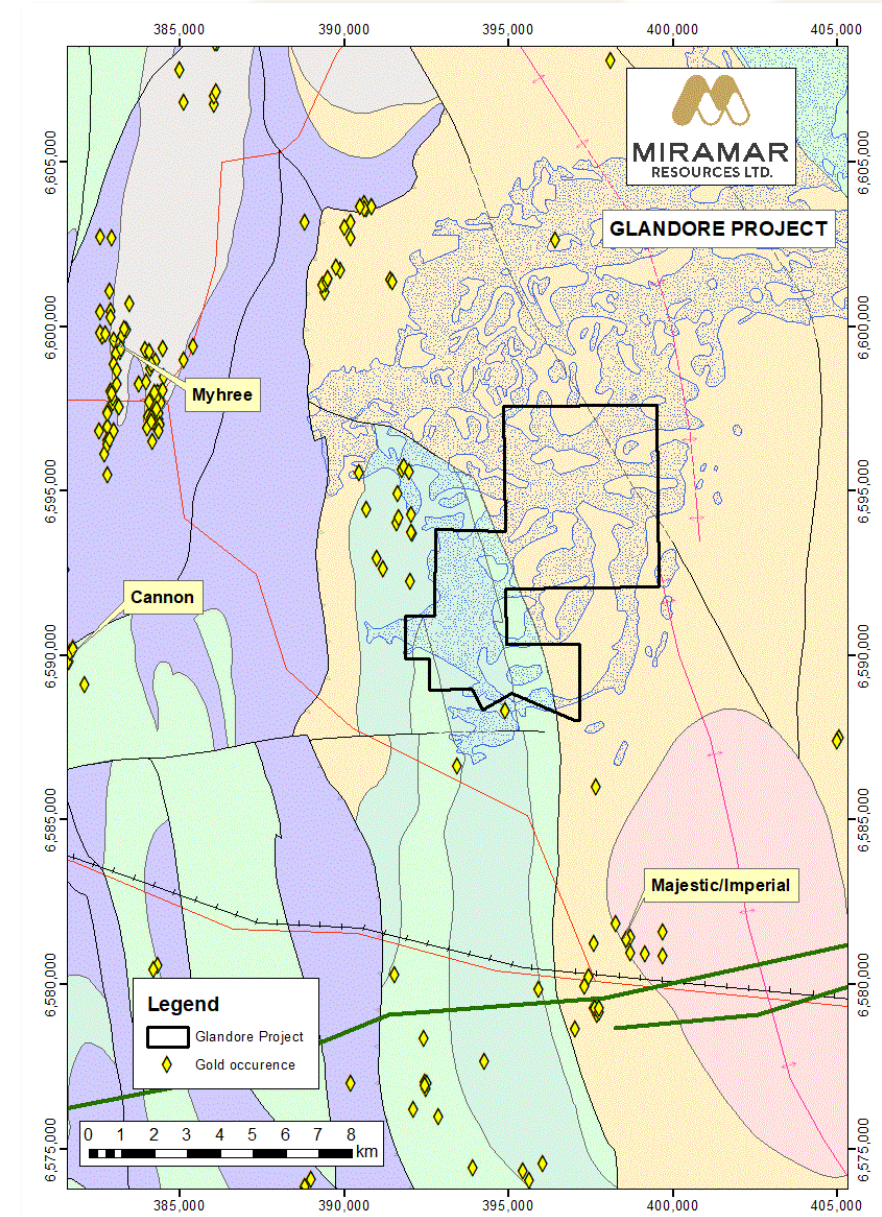


Underexplored with minimal deep drilling



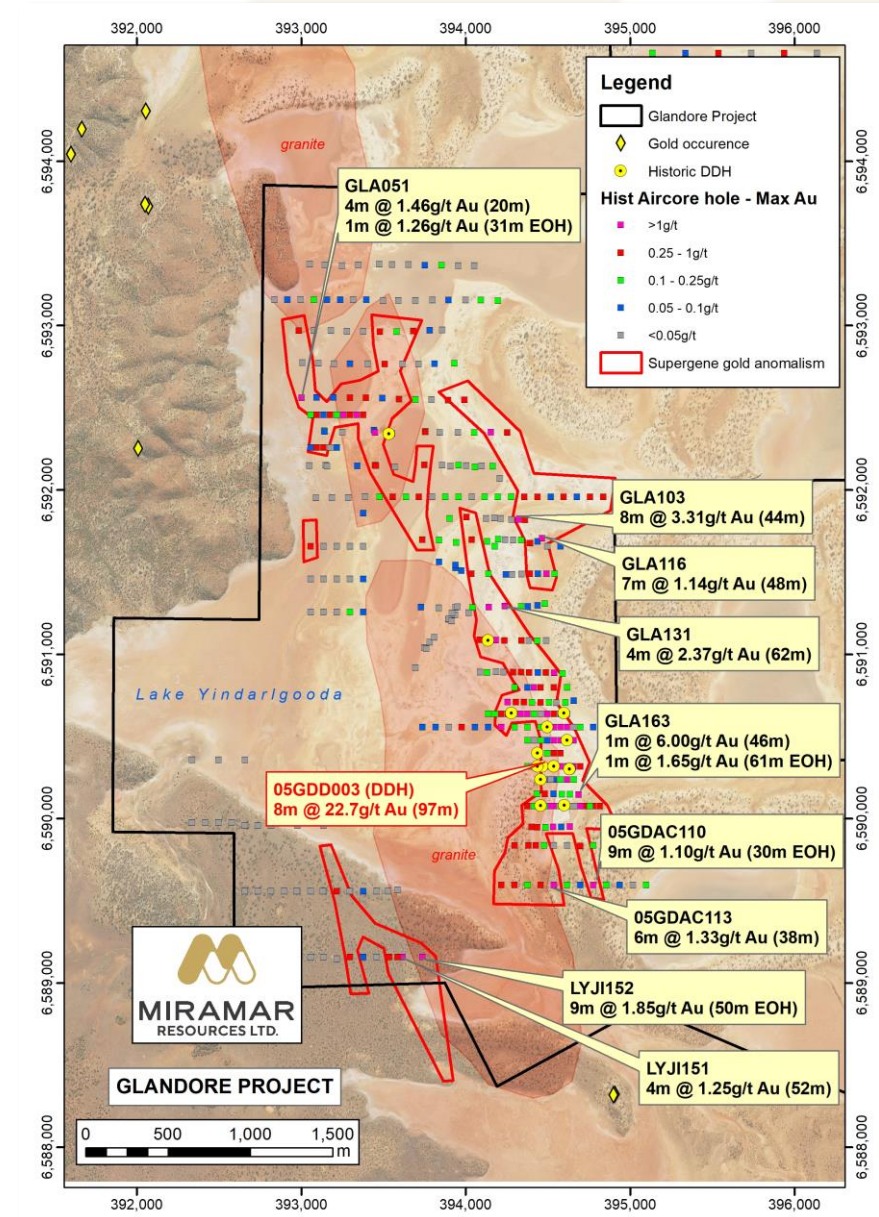
Glandore

- **40km east of Kalgoorlie** - close to mining and processing infrastructure
- Under-explored due to salt lake cover
- Heritage approvals received
- Maiden drilling programmes planned

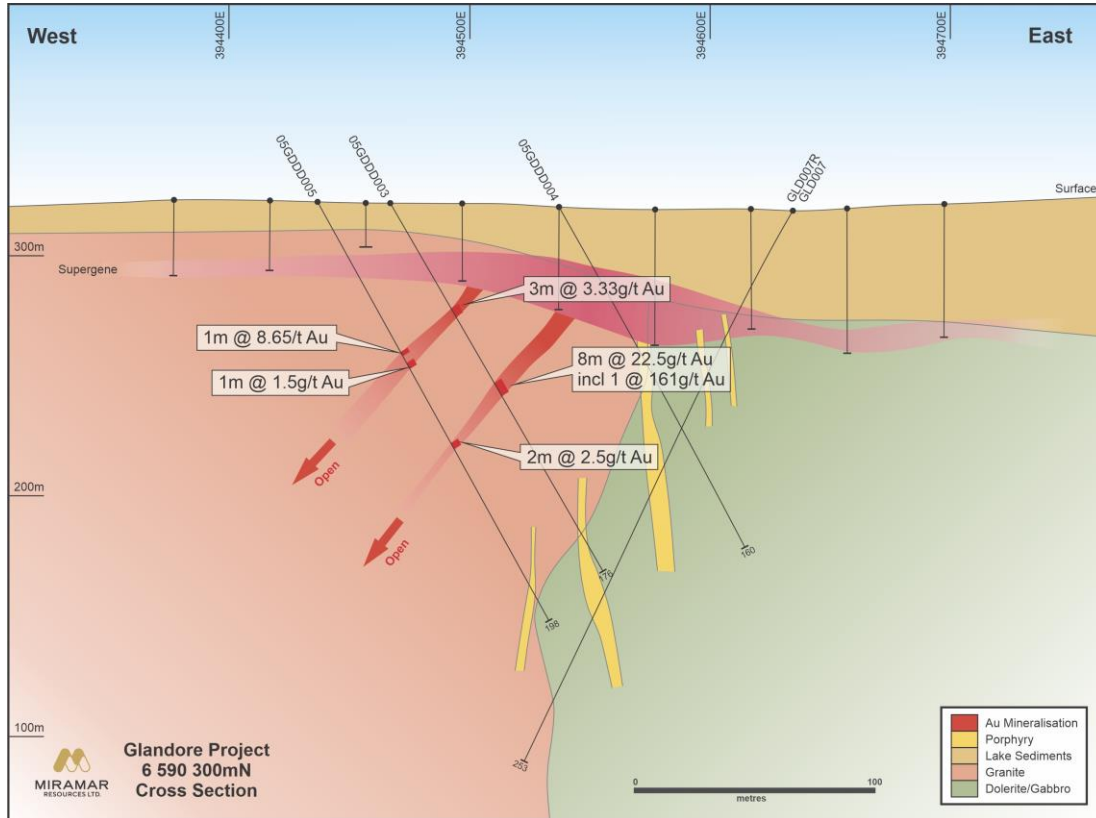


Glandore

- Layered mafic complex intruded by granite
- **East Target** – supergene mineralisation over **>2.5km** strike with **limited bedrock testing**
 - 8m @ 22.5g/t Au (DDH)
 - 4m @ 3.12g/t Au
 - 5m @ 1.76g/t Au
 - **Open to south** for another 800m
- **West Target** – untested for **>2km**
 - Several historic holes end in >1g/t Au
- Lake/land aircore drilling programmes planned



Glandore East

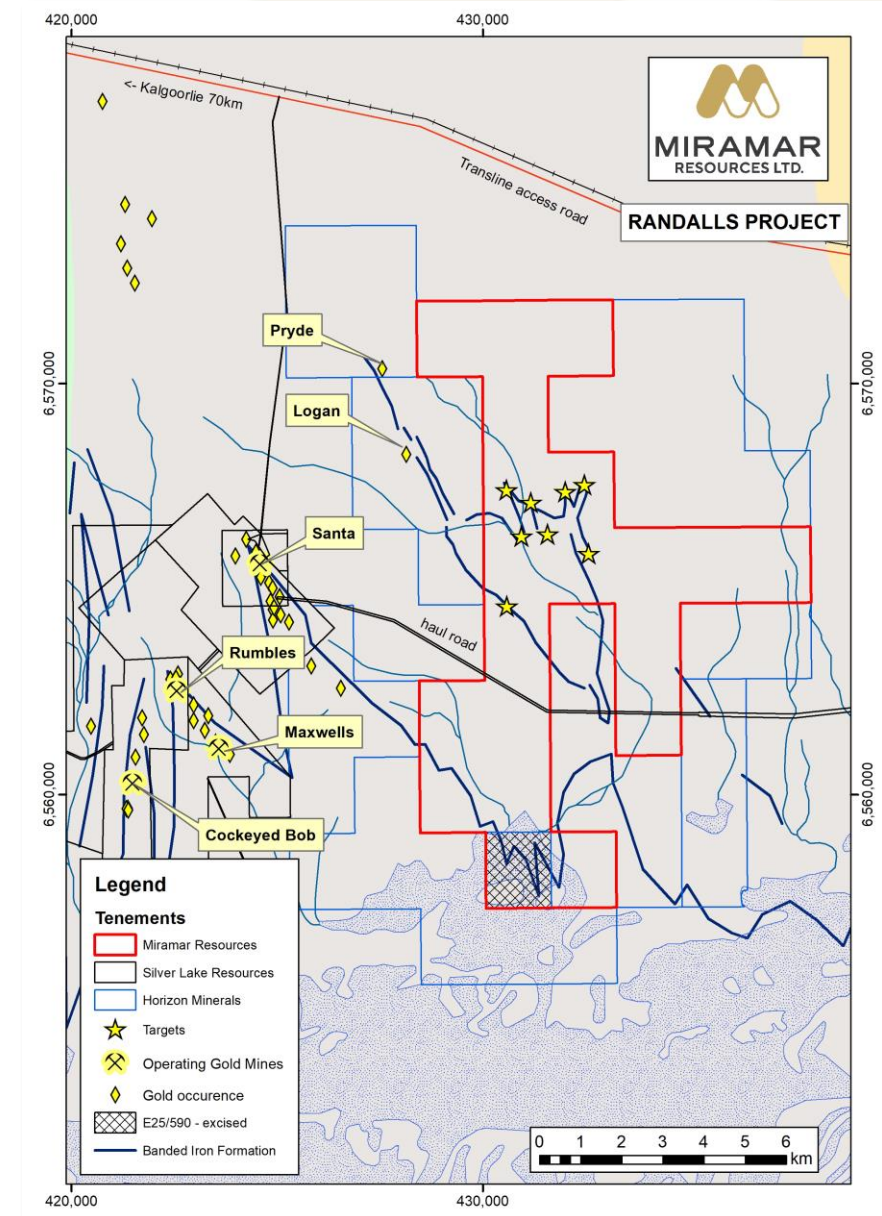


- Layered mafic sill intruded by granite
- Widespread gold anomalism at base of lake sediments
- Limited bedrock testing with shallow DDH
- Primary mineralisation hosted in W-dipping quartz veins near contact
- **Open at depth and along strike**

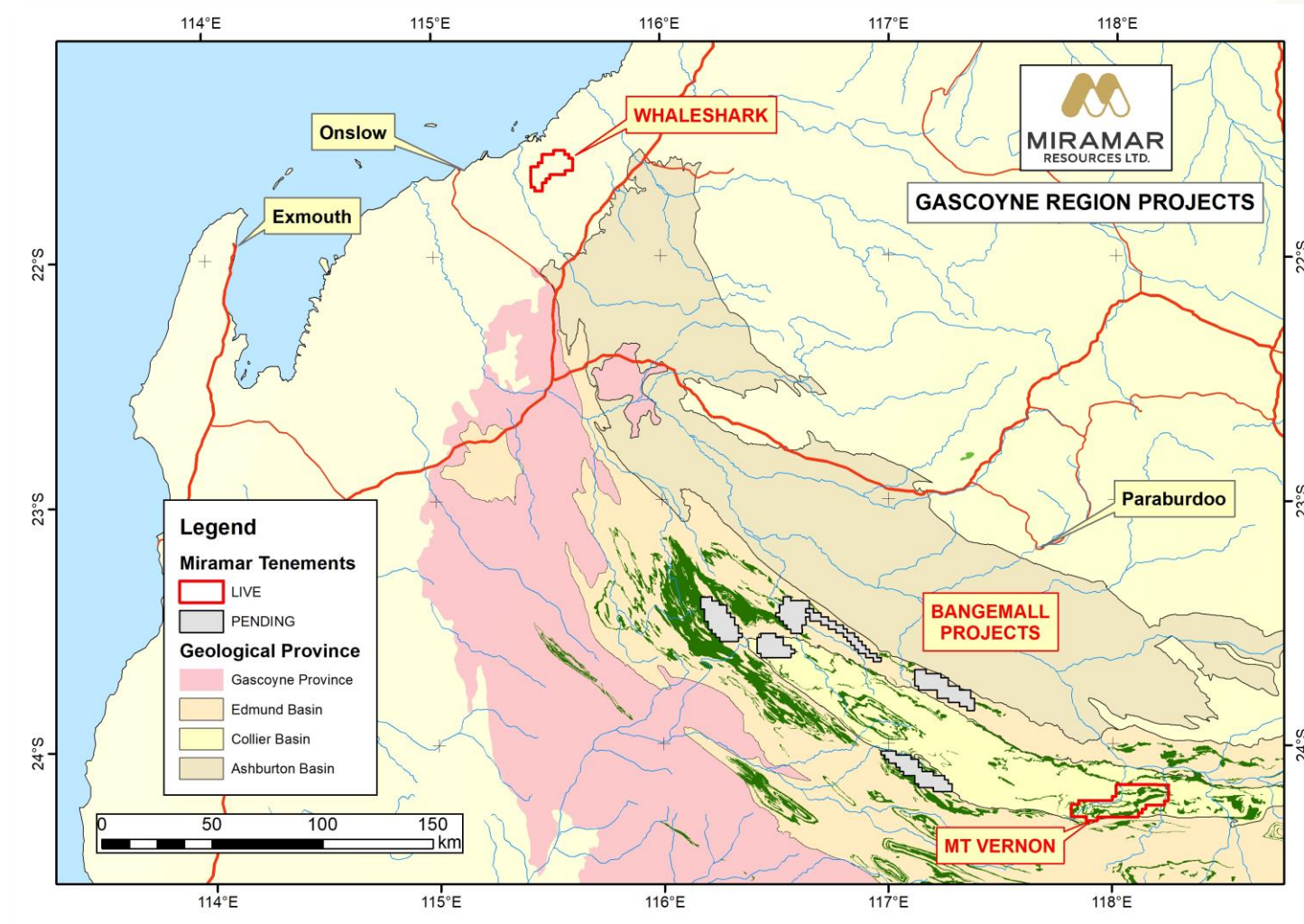


Randalls

- 70km east of Kalgoorlie - adjacent to Silver Lake's "Mt Belches" gold mines
- Poorly explored - minimal drilling of BIF
- Numerous targets identified
- Awaiting tenement grant



Gascoyne region projects



Two projects within the
Capricorn Orogen

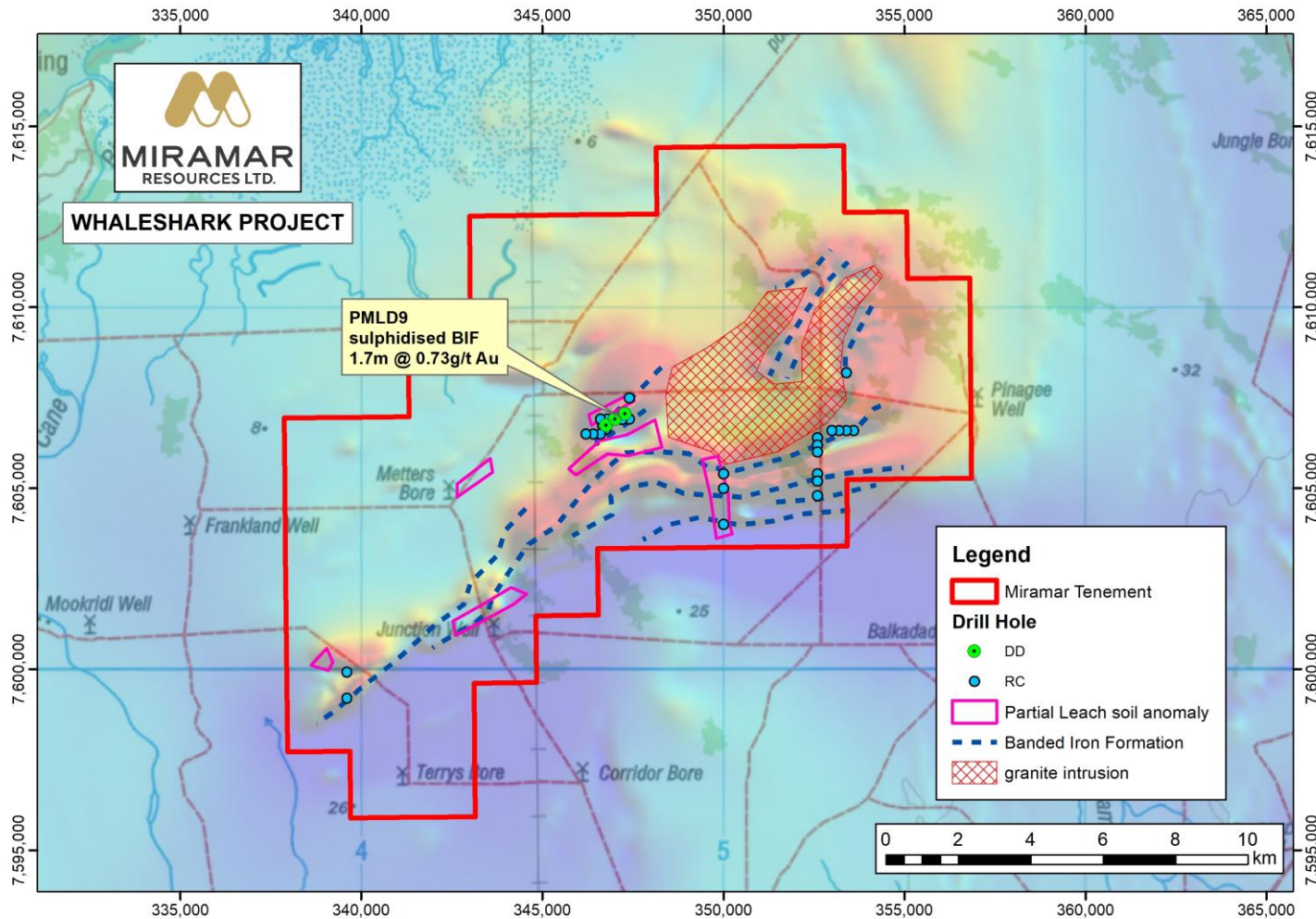
■ Whaleshark

- Large BIF complex under Carnarvon Basin sediments

■ Bagemall (Ni-Cu-PGE)

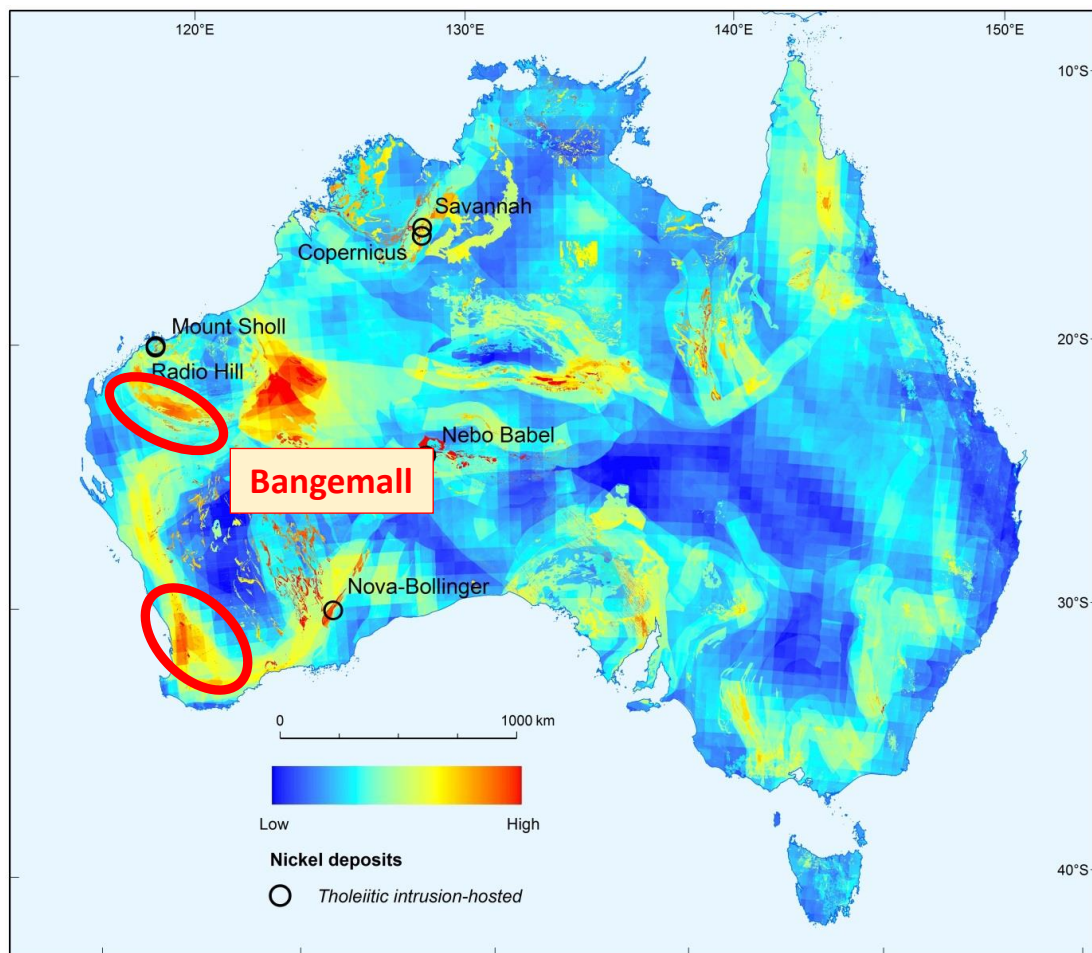
- Strategic landholding in emerging province
- Mineral potential recognised by state/federal governments

Whaleshark



- Large folded BIF intruded by granite
- Prospective for
 - **BIF-hosted gold**
 - **IOCG**
- Depth to basement ~120m
- Historic drilling intersected gold in sulphidised BIF
- MMI soil sampling planned for Sept Qtr

Bangemall – Emerging Ni-Cu-PGE Province

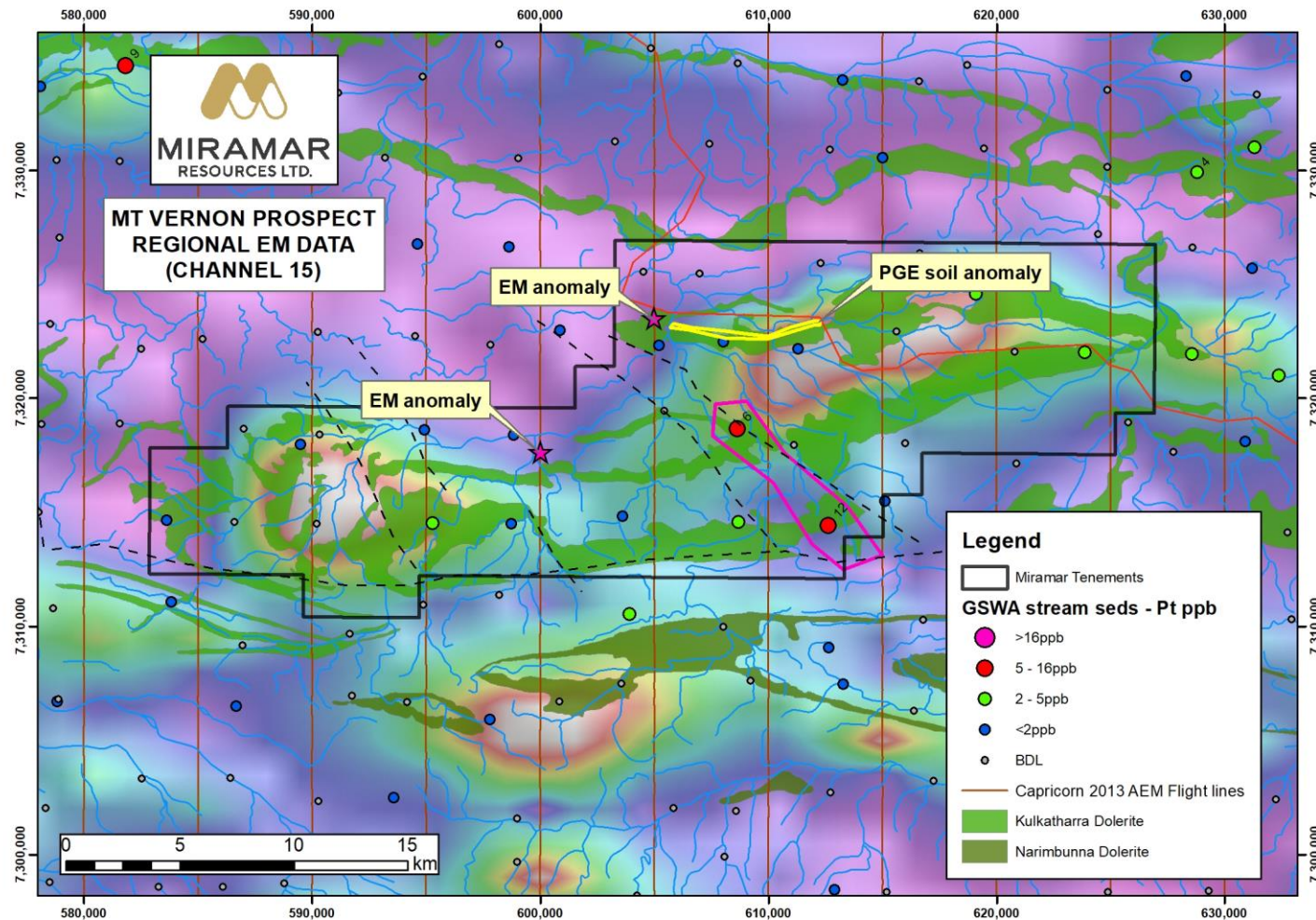


“Potential for intrusion-hosted Ni-Cu-PGE sulfide deposits in Australia”,
Geoscience Australia Record 2016/01

2016 Geoscience Australia “Atlas”

- Continental-scale assessment of intrusion-hosted **Ni-Cu-PGE** potential
- Combined evidence of four key mineral system components:
 - Energy sources/system drivers
 - Mantle/crustal architecture
 - Sources of ore metals
 - Gradients in depositional parameters
- Highlighted several areas not previously recognised
 - **Southwest WA – Julimar** discovery
 - **Bangemall** region

Bangemall – Mt Vernon Target



Tenement granted Jan 2021

Key ingredients:

- Located between two major crustal-scale faults
- Numerous Proterozoic dolerite dykes/sills
- **Ni-Cu-PGE** stream sediment anomalism
- Large **late-time AEM conductors**
- Minimal **Ni-Cu-PGE** exploration
- **EM survey scheduled for H2 2021**

Developing a pipeline of drill targets

Region	Project	Tenement grant	Target Generation	Aircore drilling	Bedrock testing	Advanced Exploration
Eastern Goldfields	Gidji JV	The Jog Claypan Lake		Piccadilly Railway Marylebone 8-Mile		
	Glandore		Glandore			
	Randalls	Randalls				
Murchison	Lang Well		Lang Well			
	Lakeside	Lakeside				
Gascoyne	Bangemall	various	Mt Vernon			
	Whaleshark		Whaleshark			

2021 work programme/news flow

Region	Project	Mar 21 Qtr	Jun 21 Qtr	Sep 21 Qtr	Dec 21 Qtr
Eastern Goldfields	Gidji JV	Aircore			
			magnetics		
			RC		
		DDH			DDH
	Glandore		gravity		
				Aircore	
					DDH
	Randalls		Tenement grant?	Geochem/GPX	Aircore/RC
Murchison	Lang Well	gravity		Aircore	
	Lakeside				
Gascoyne	Whaleshark			Geochem	
	Mt Vernon			Airborne EM	
	Bangemall		Tenement grant?	Geochem/GPX	
News flow		Results	Results	Results	Results

Summary

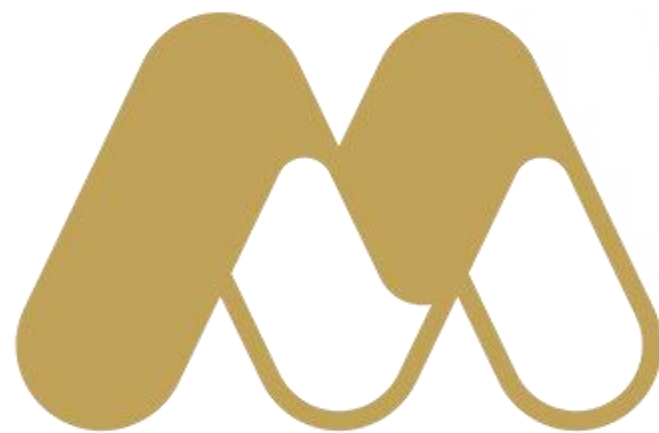
Since listing in Oct 20, Miramar has:

- Discovered **high-grade gold** across multiple new targets at **Gidji**
- Completed permitting and preparations for initial drilling at **Glandore**
- Secured a strategic landholding in an emerging **Ni-Cu-PGE** province

Miramar has the key ingredients to create **shareholder value** through **discovery**:

- **People** - Track record of successful discovery, development and production
- **Projects** - Highly prospective projects in world class locations
- **Funding** - Well funded after \$8M IPO





miramarresources.com.au | ASX: **M2R**